

METROID™

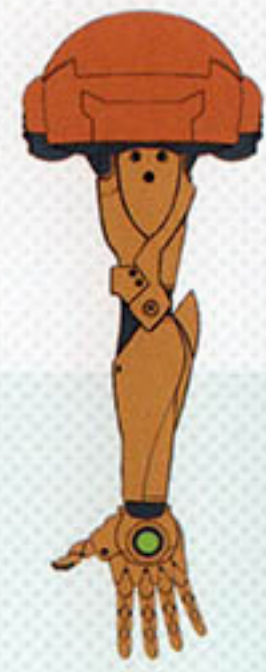
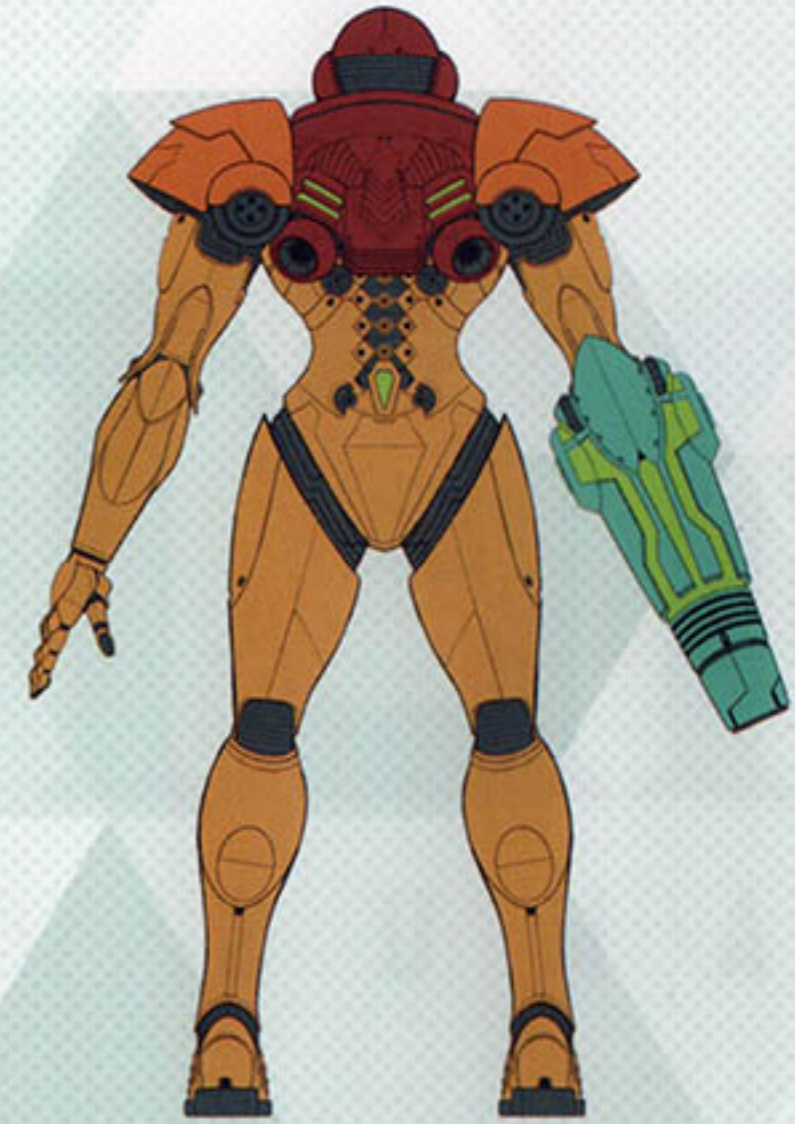
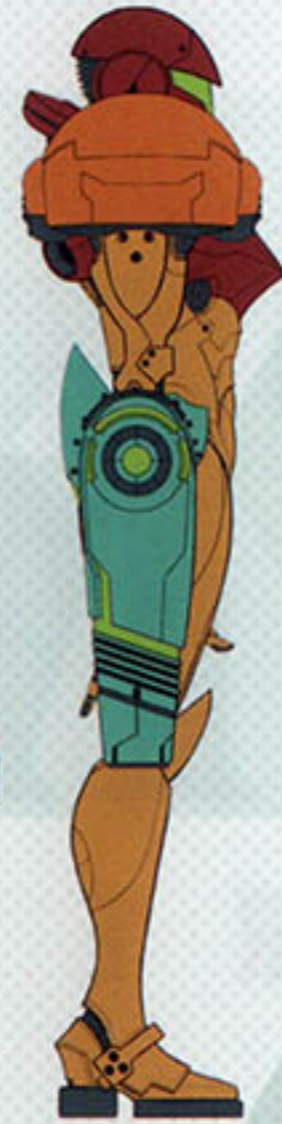
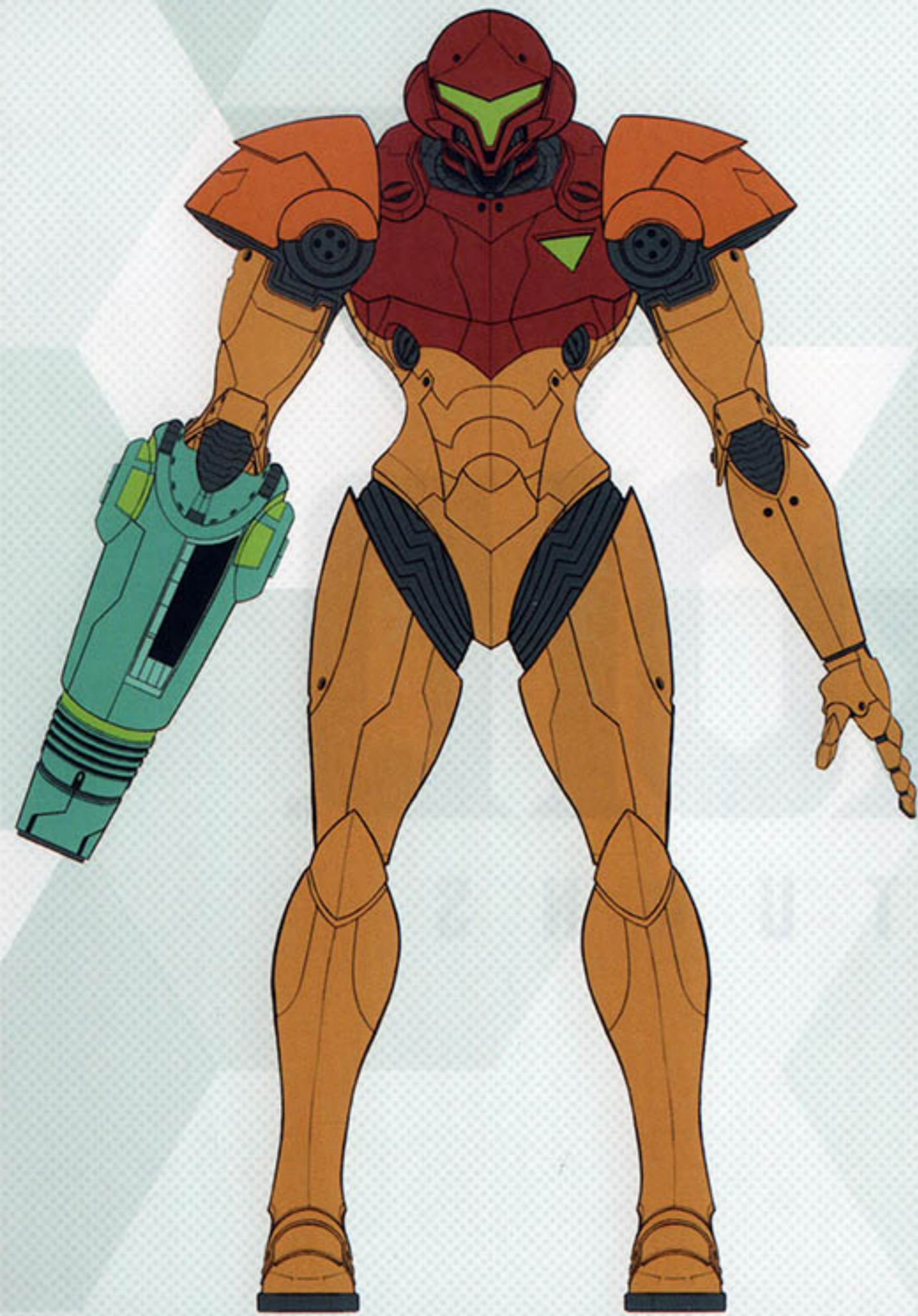
SAMUS RETURNS

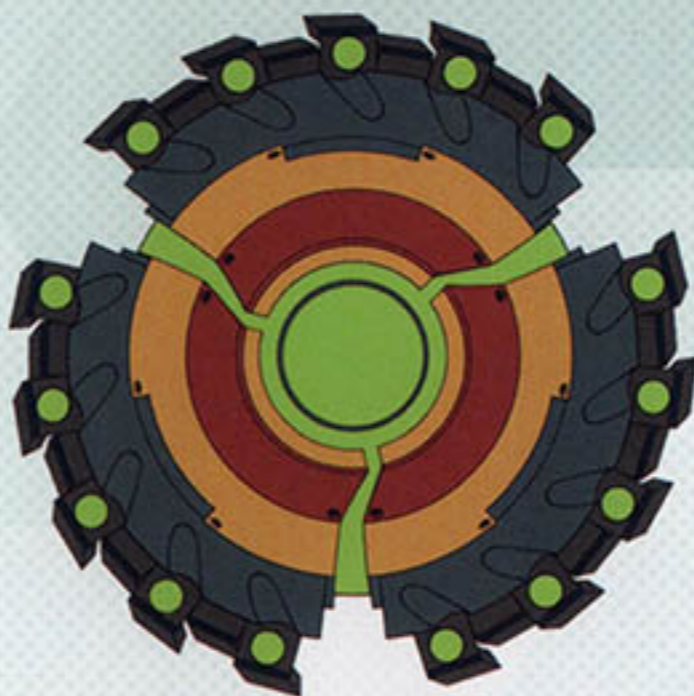
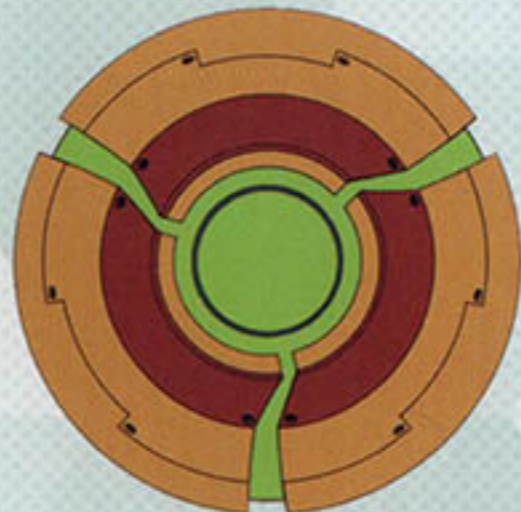
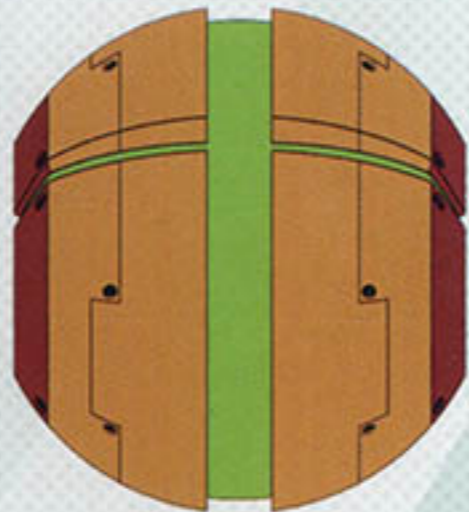
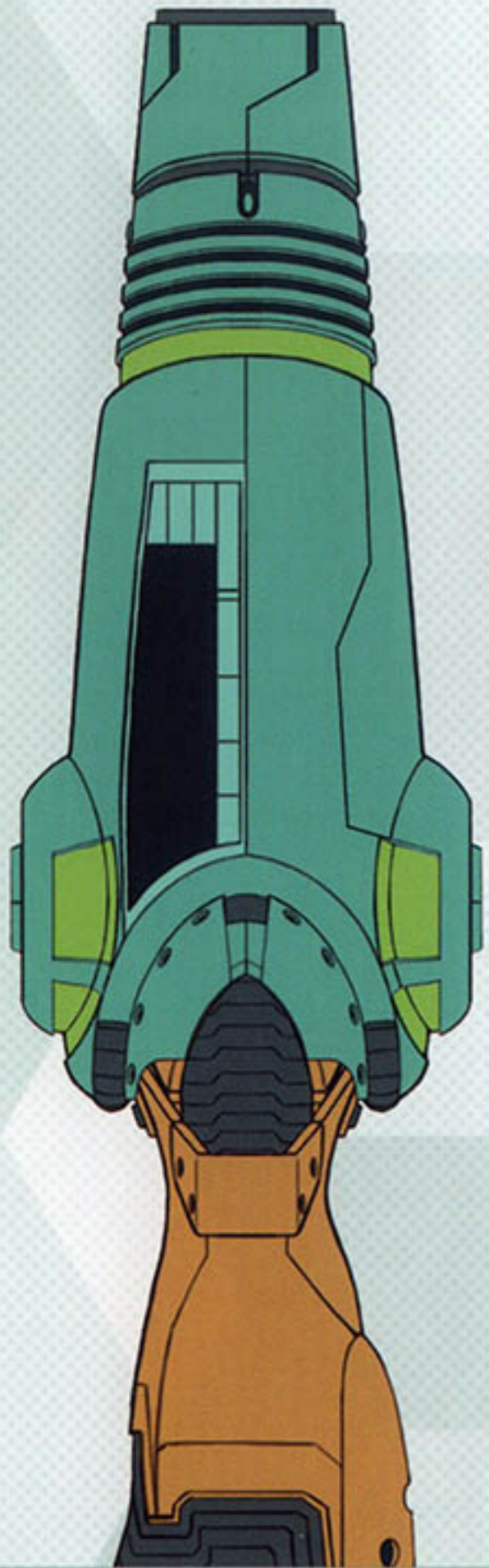
ARTBOOK

METROID™

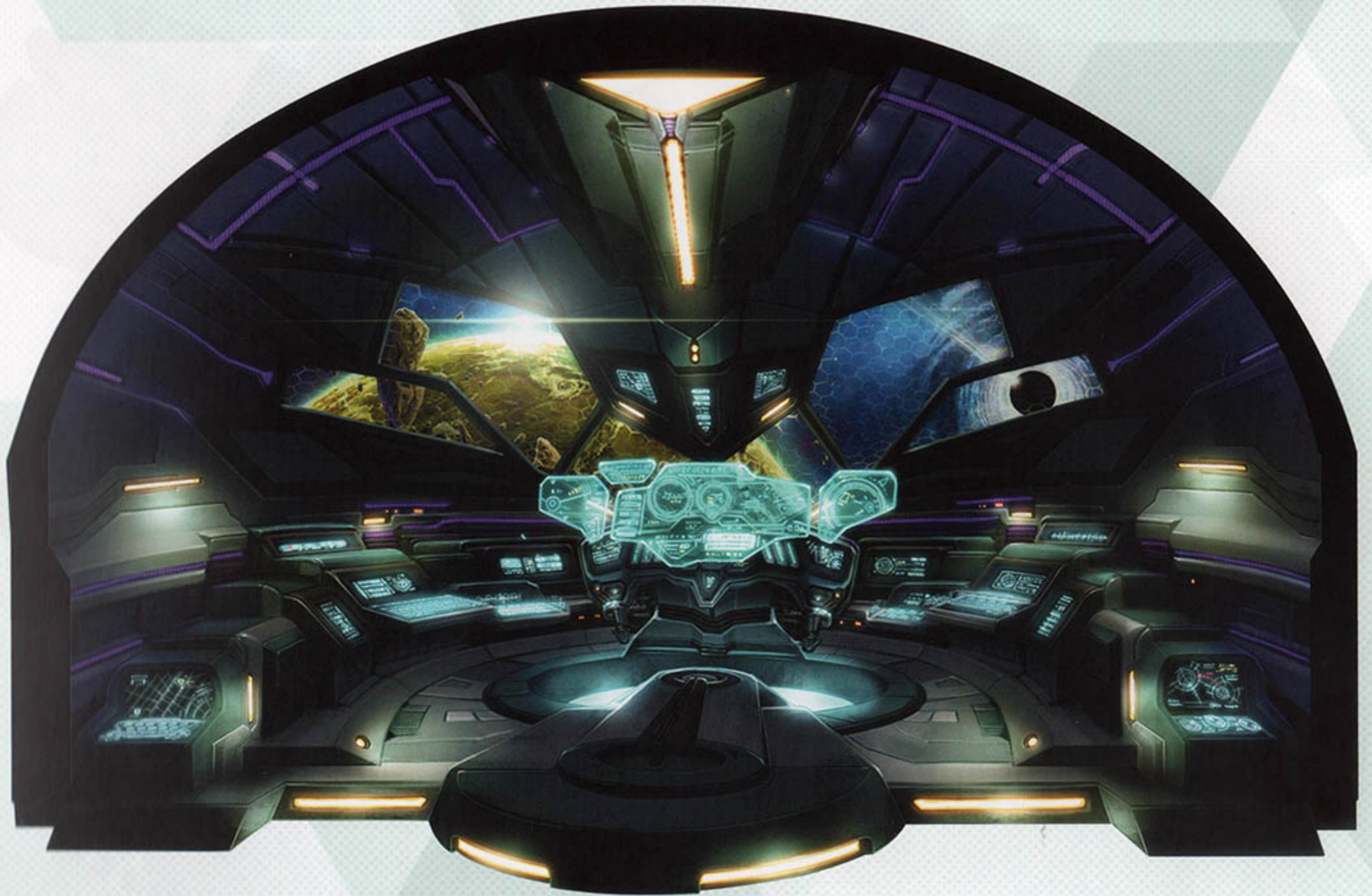
S A M U S R E T U R N S

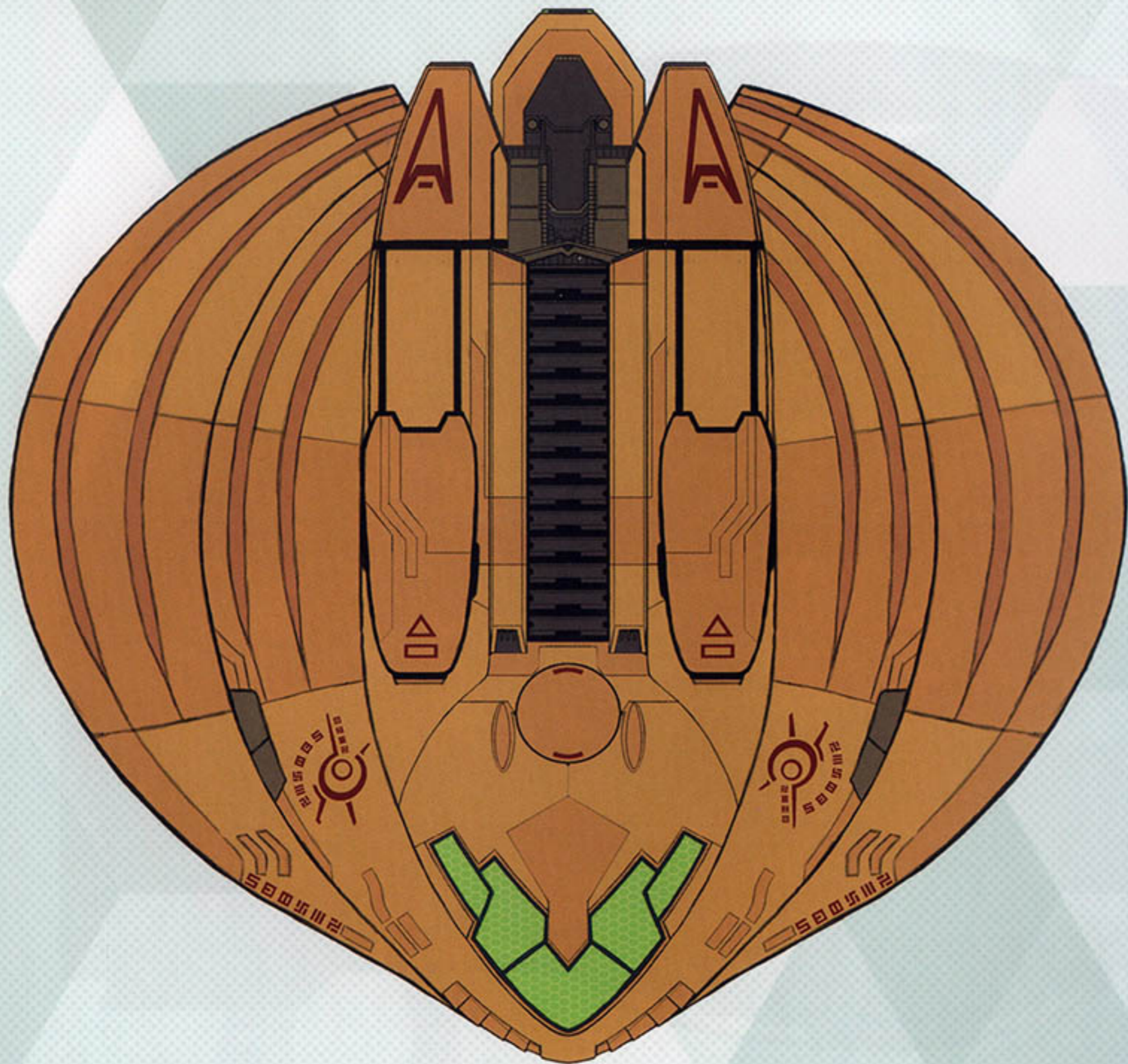
© 2017 Nintendo Co., Ltd.
BUNDLE PACK VERSION • VERSION VENDUE EN PACK

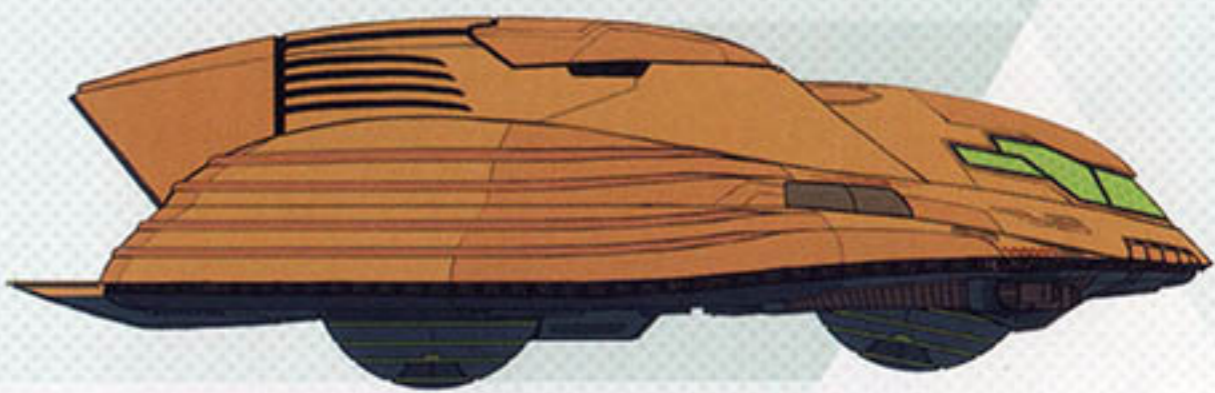










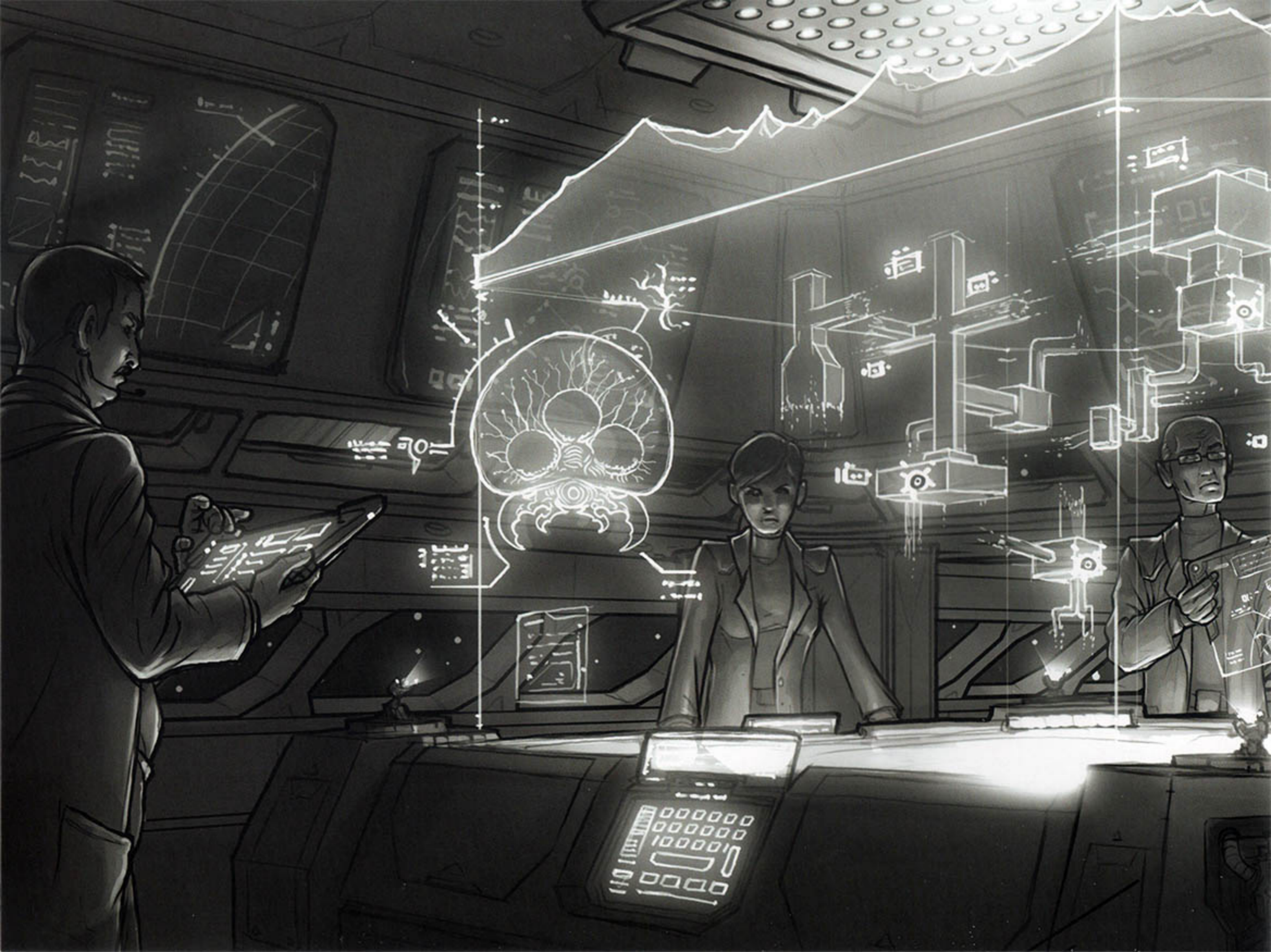


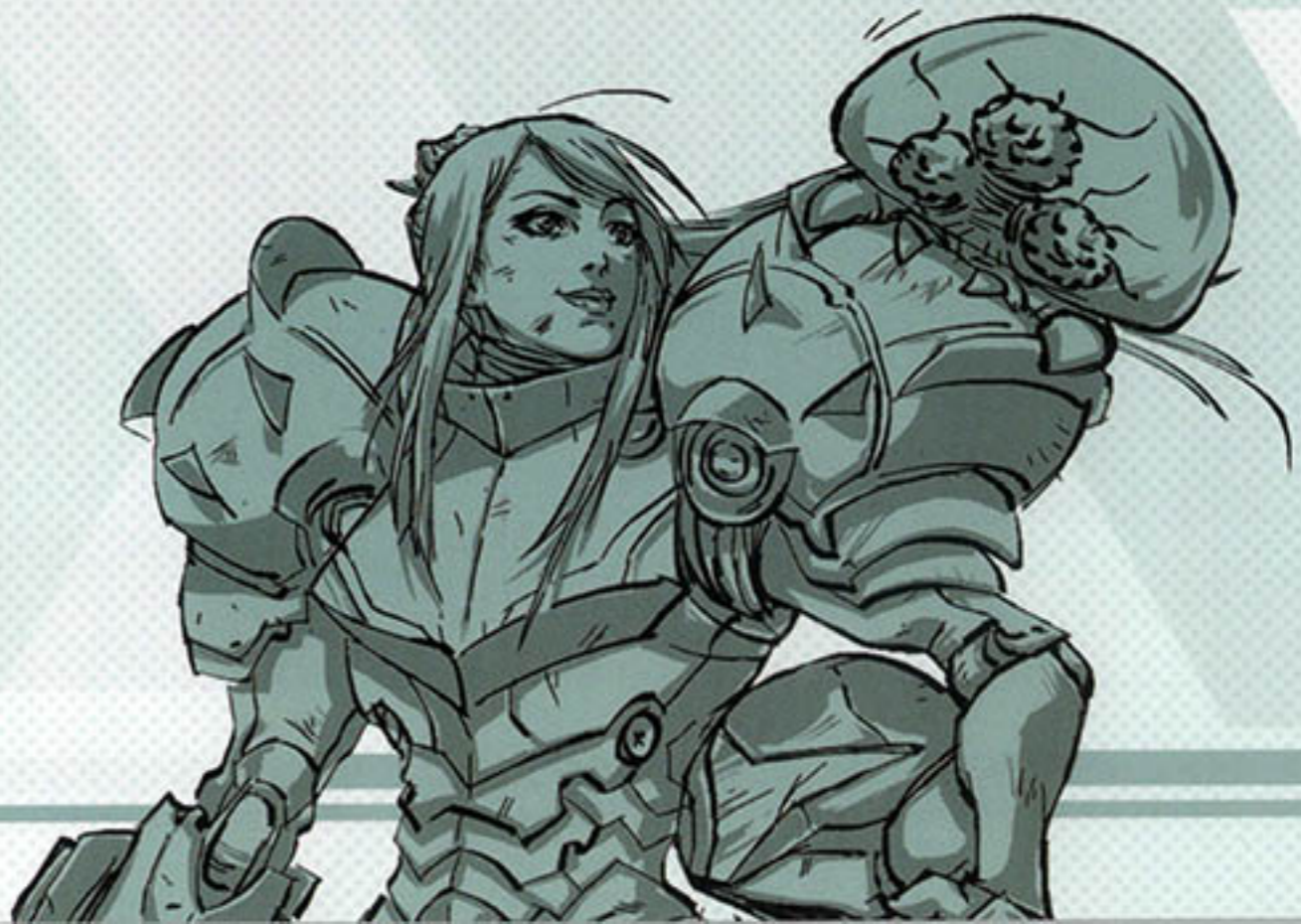








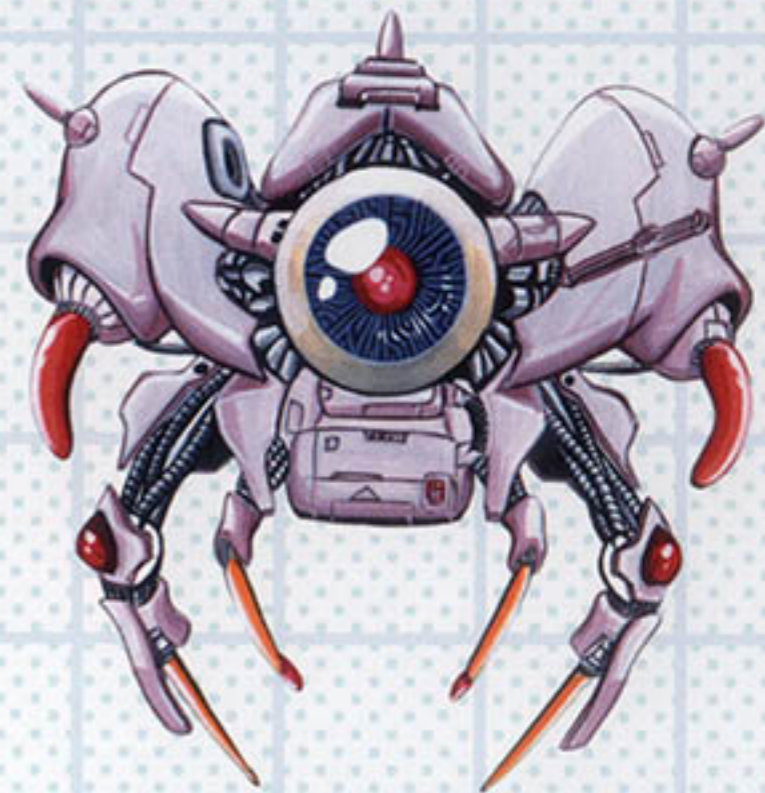
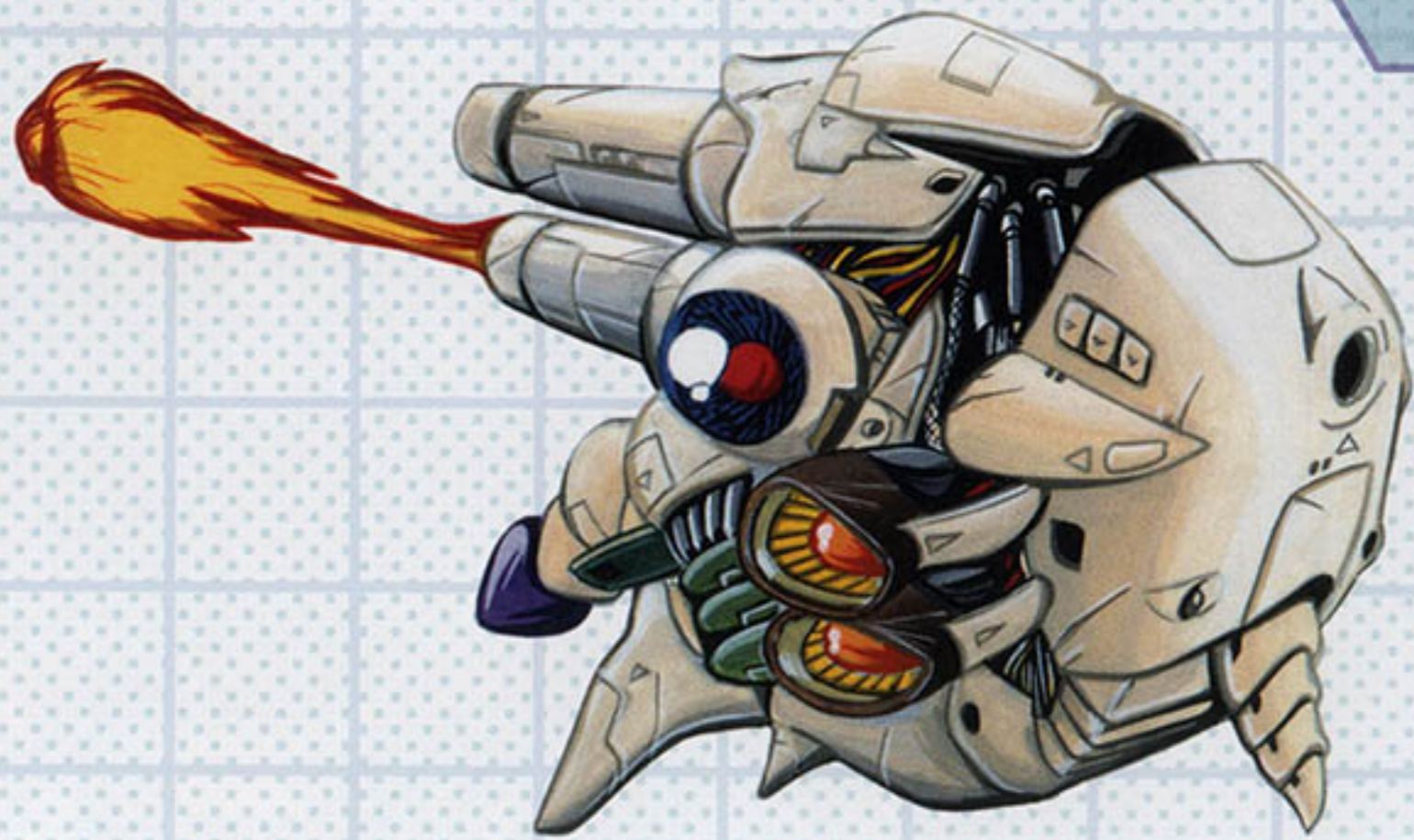
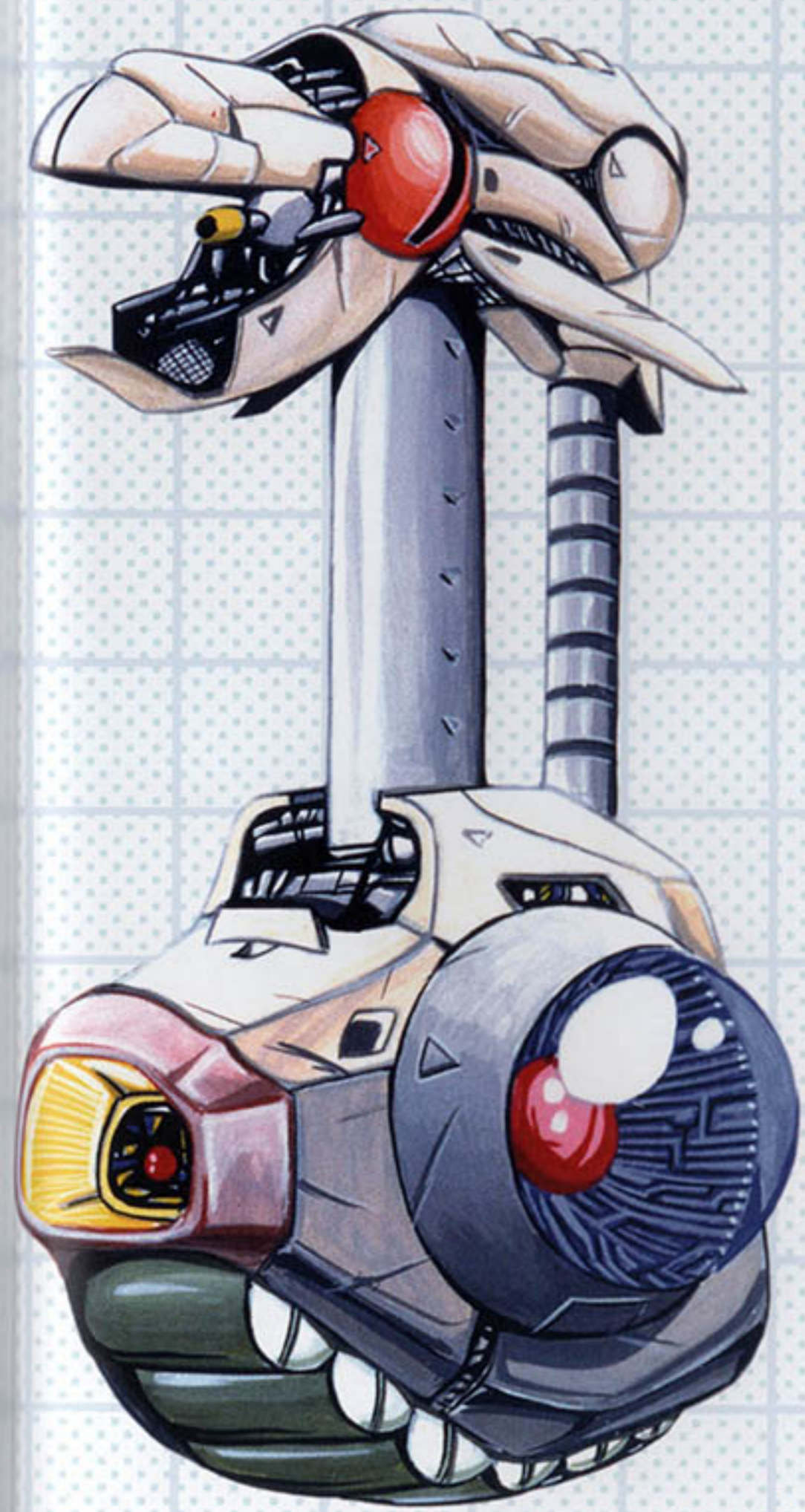


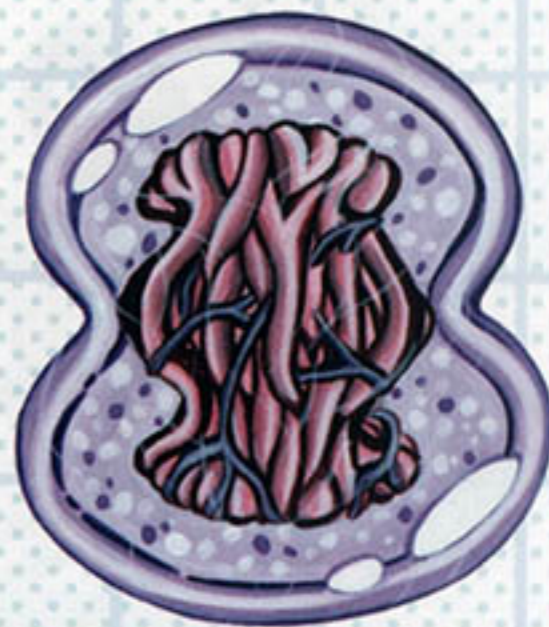
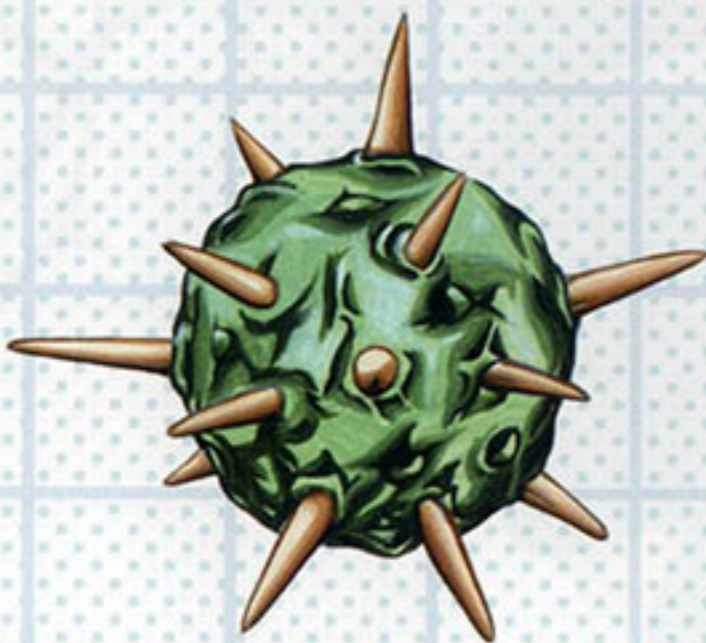
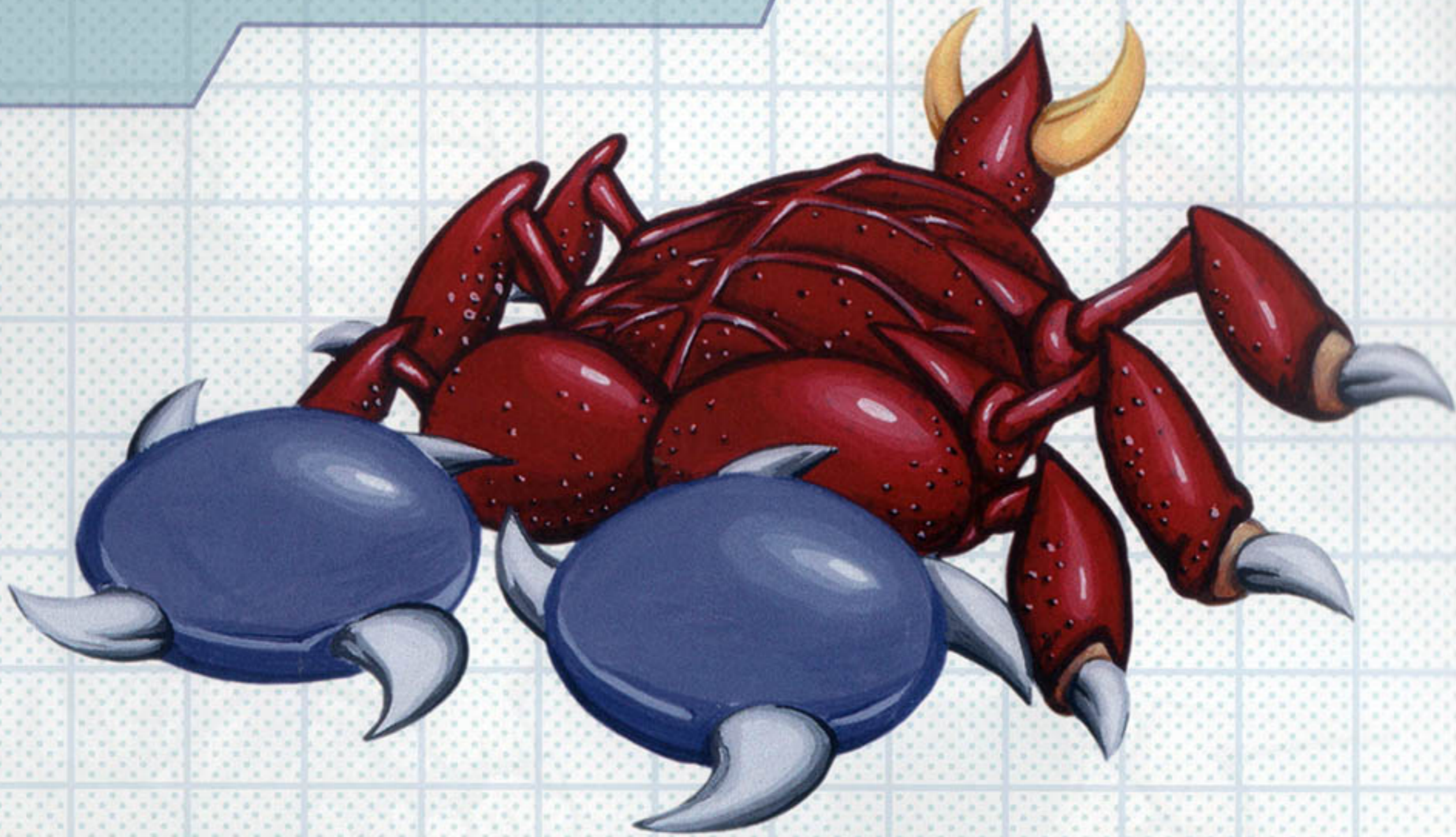


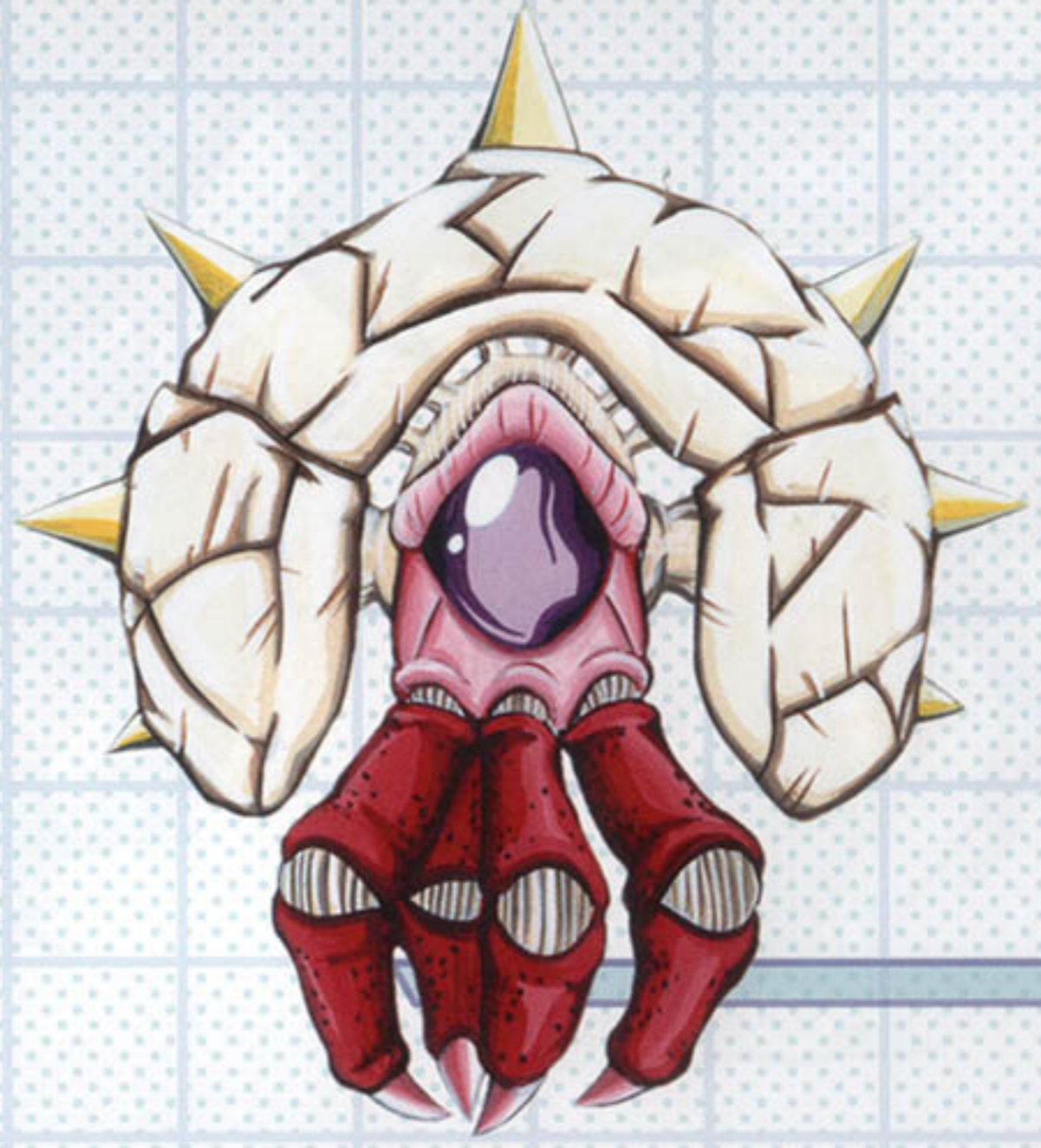
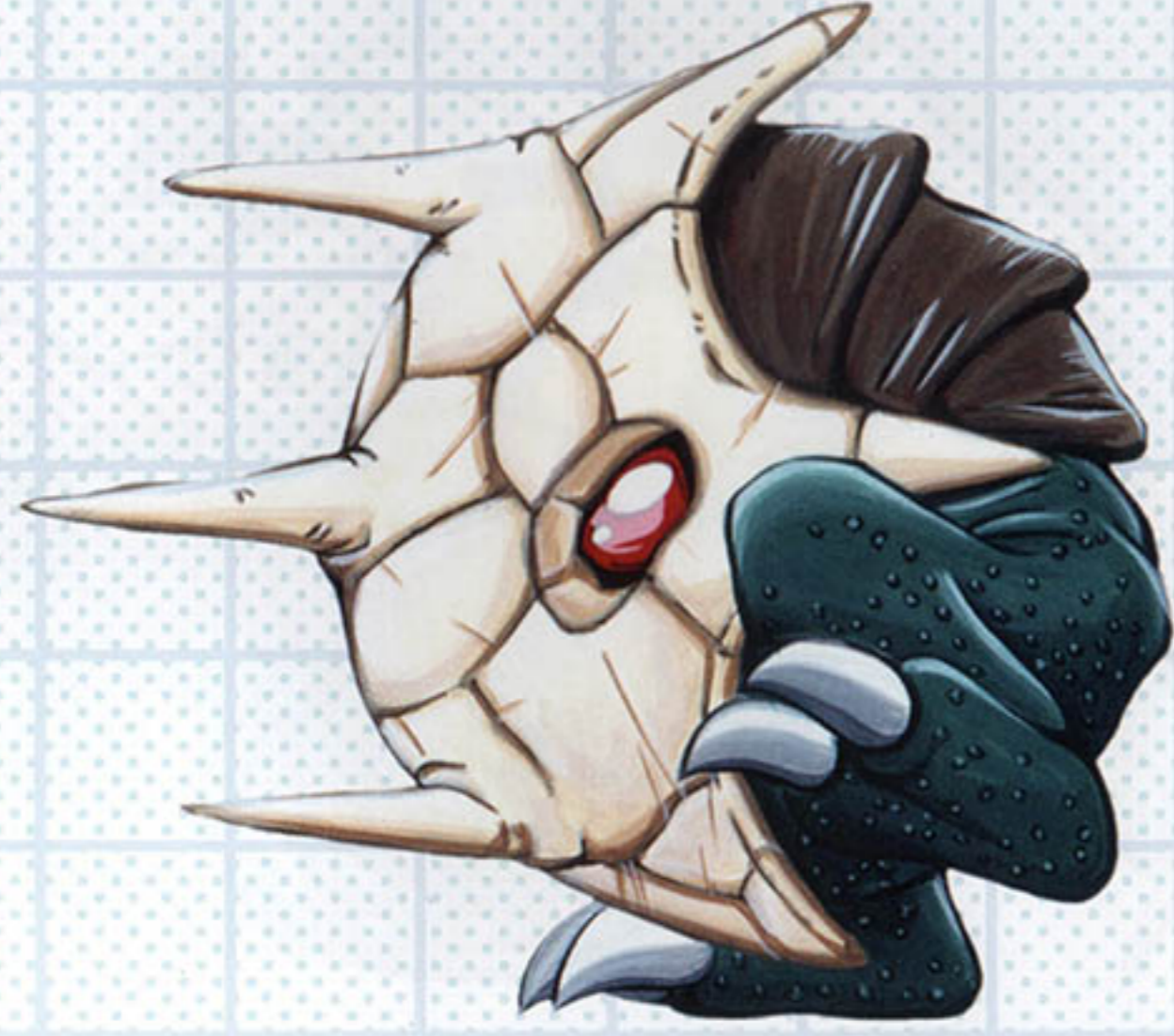
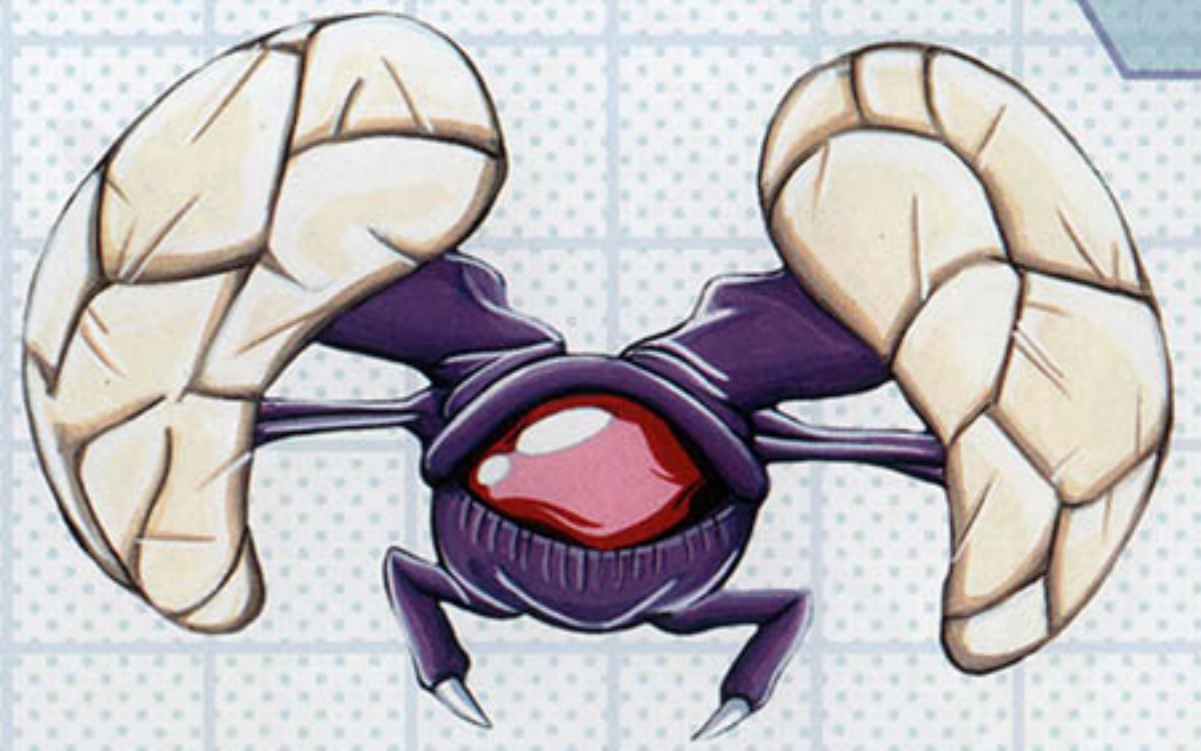
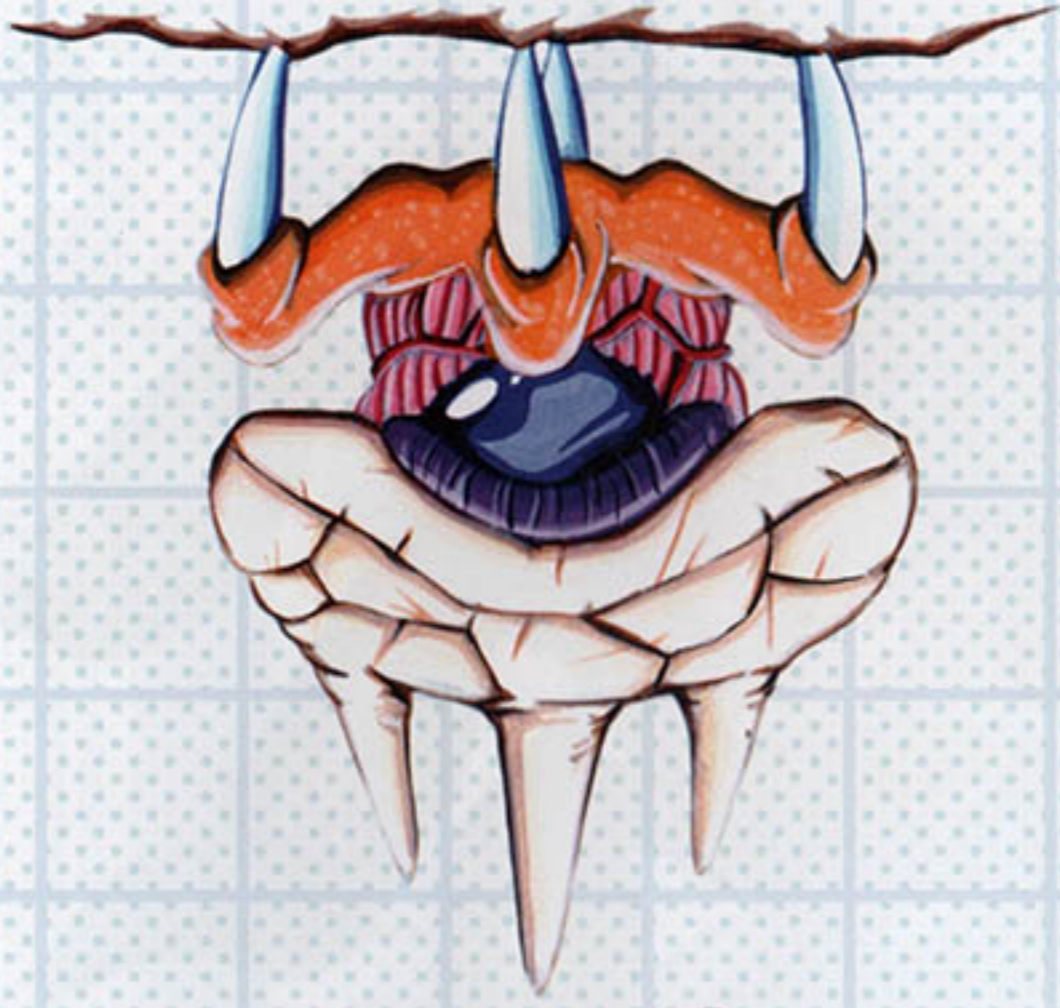


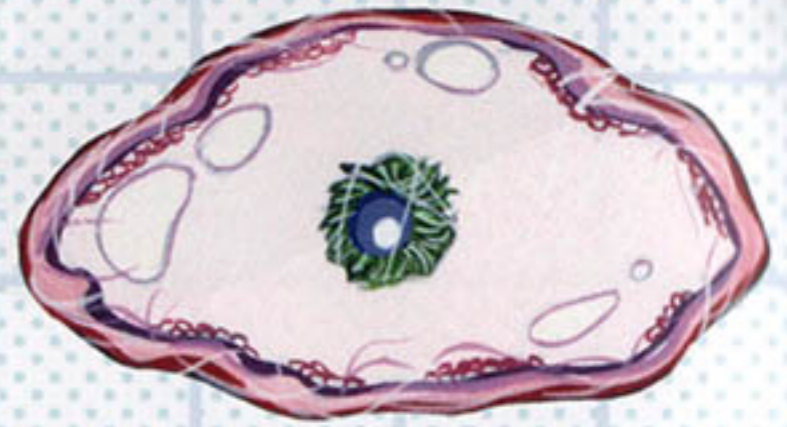
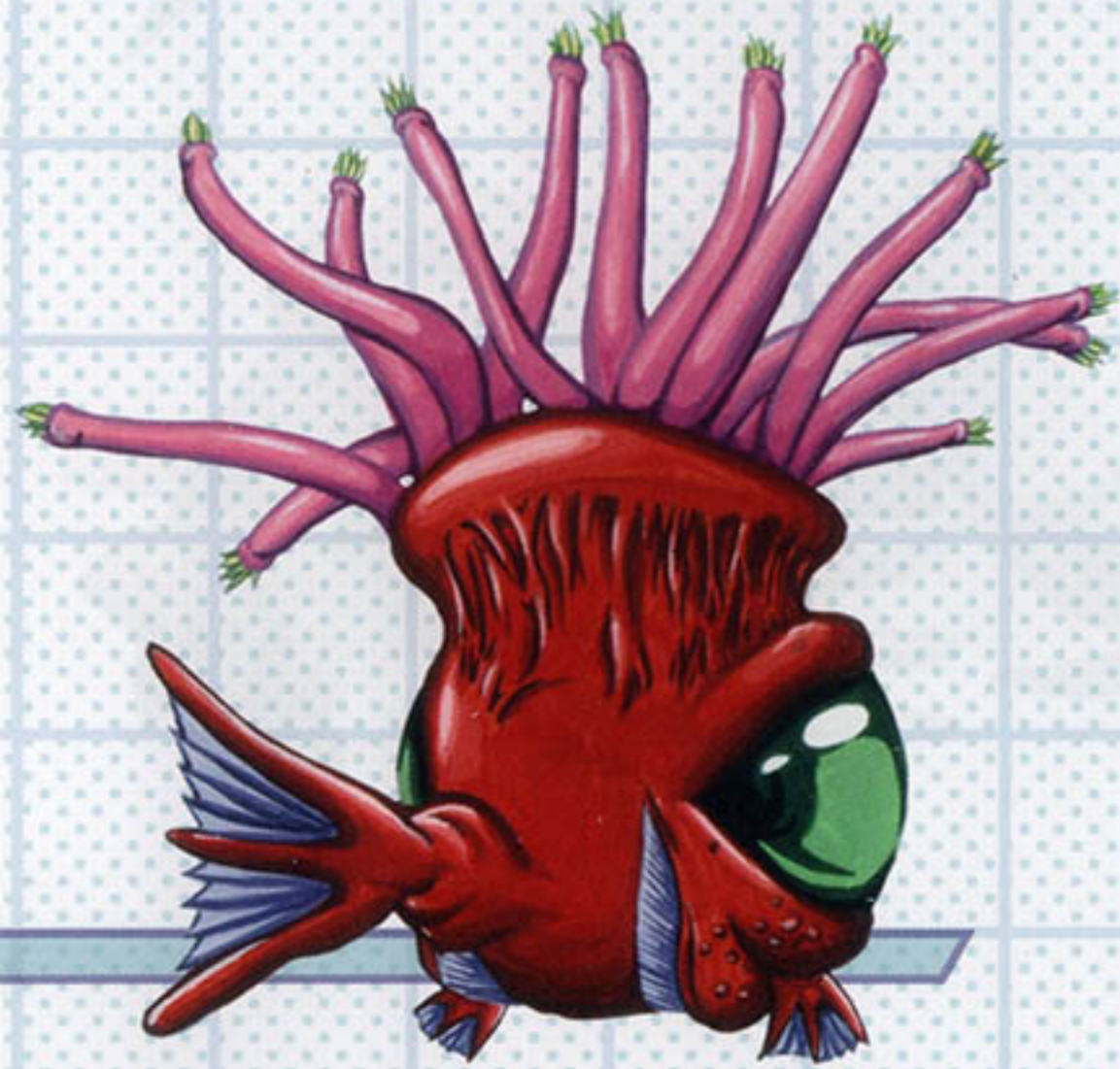
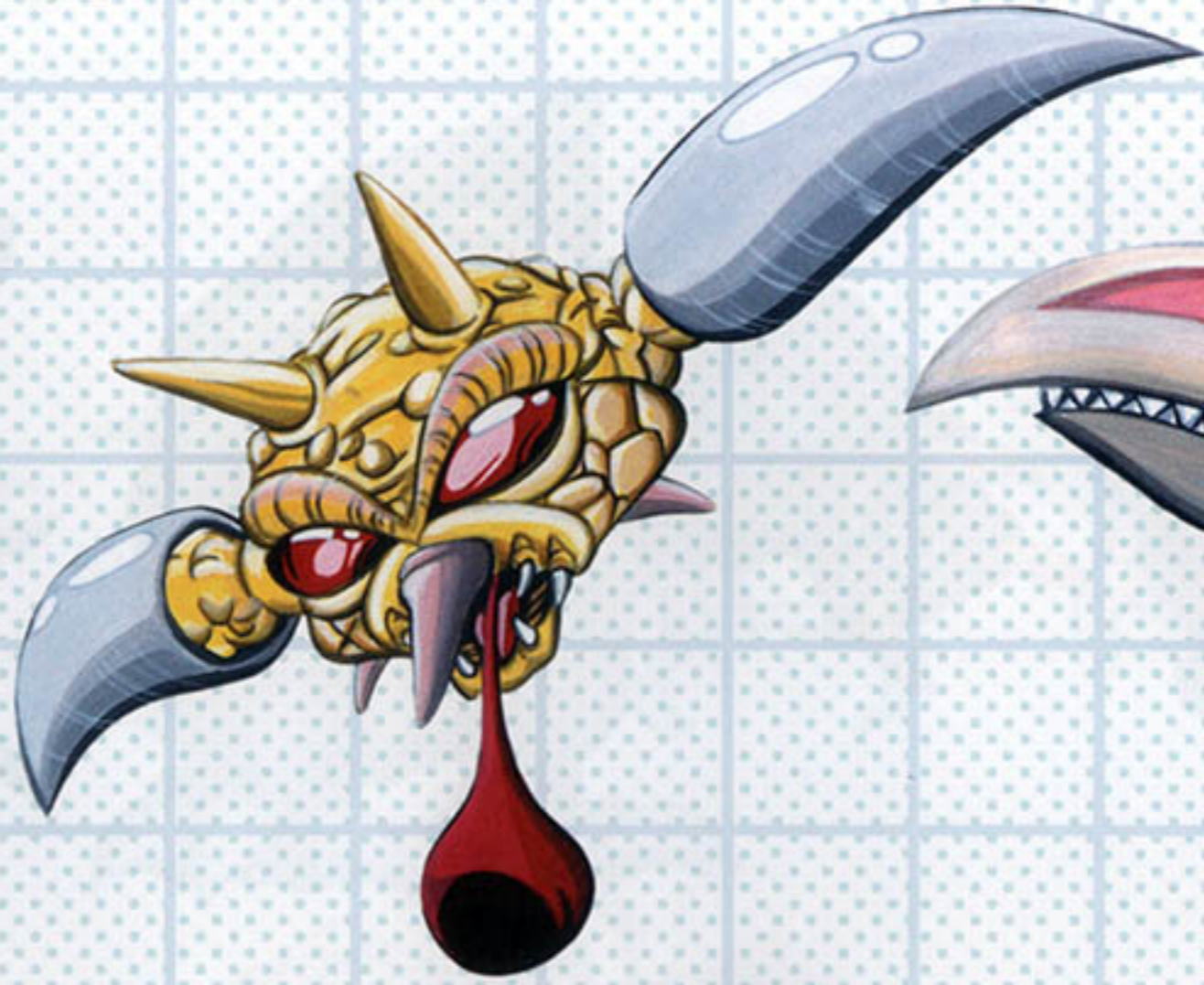


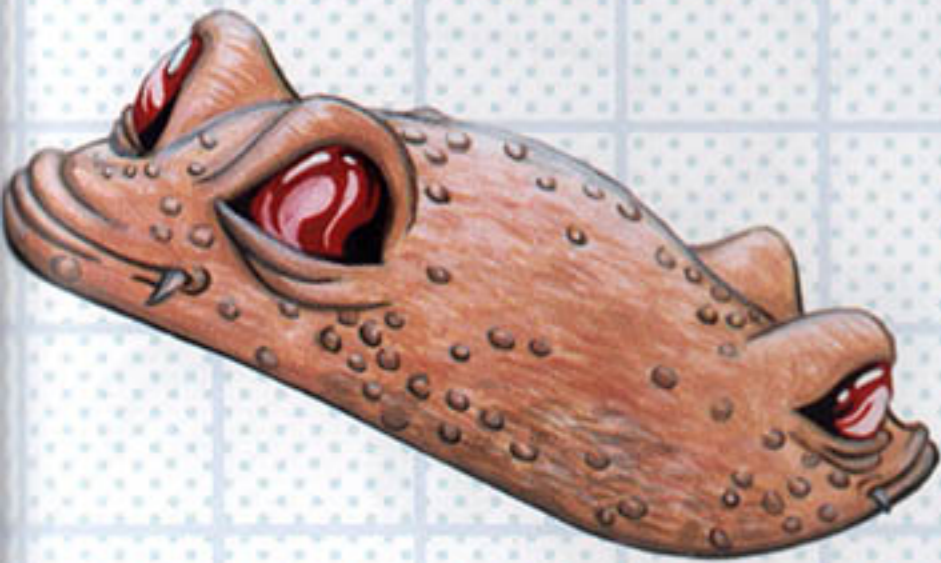
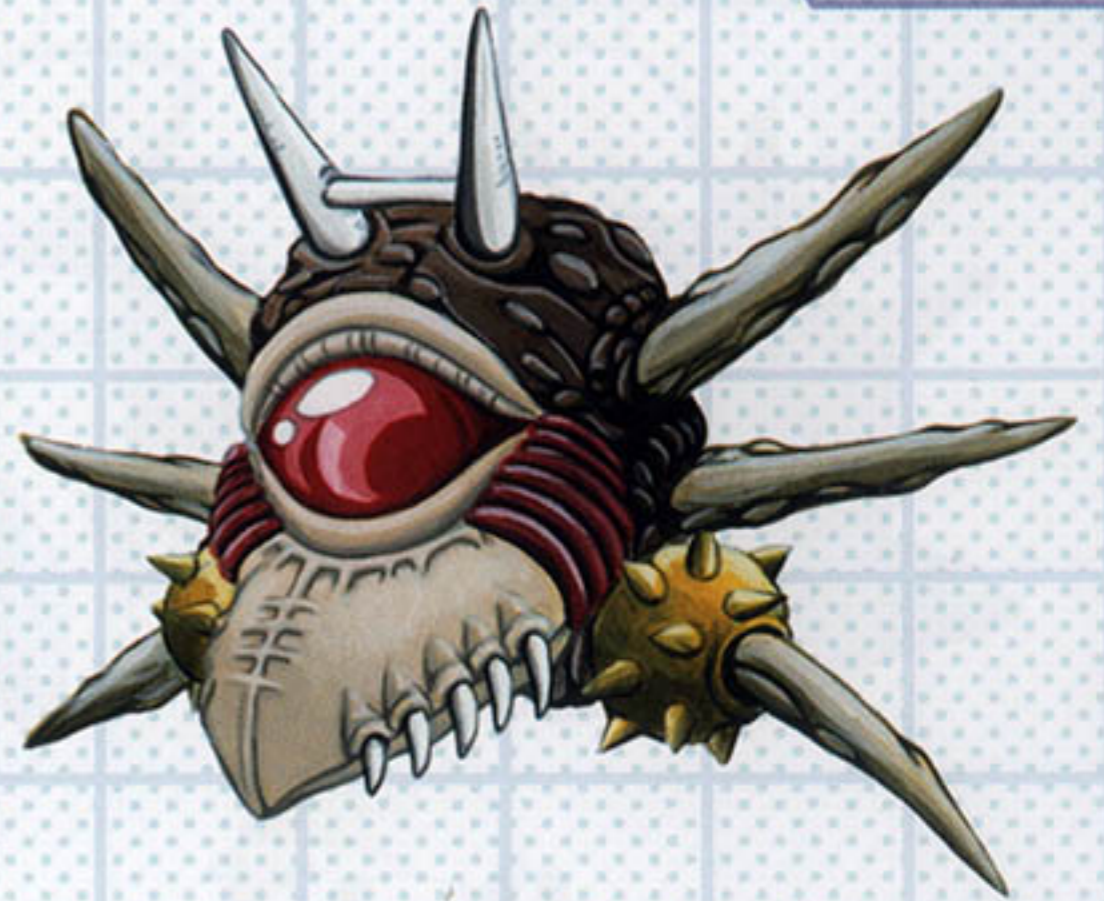








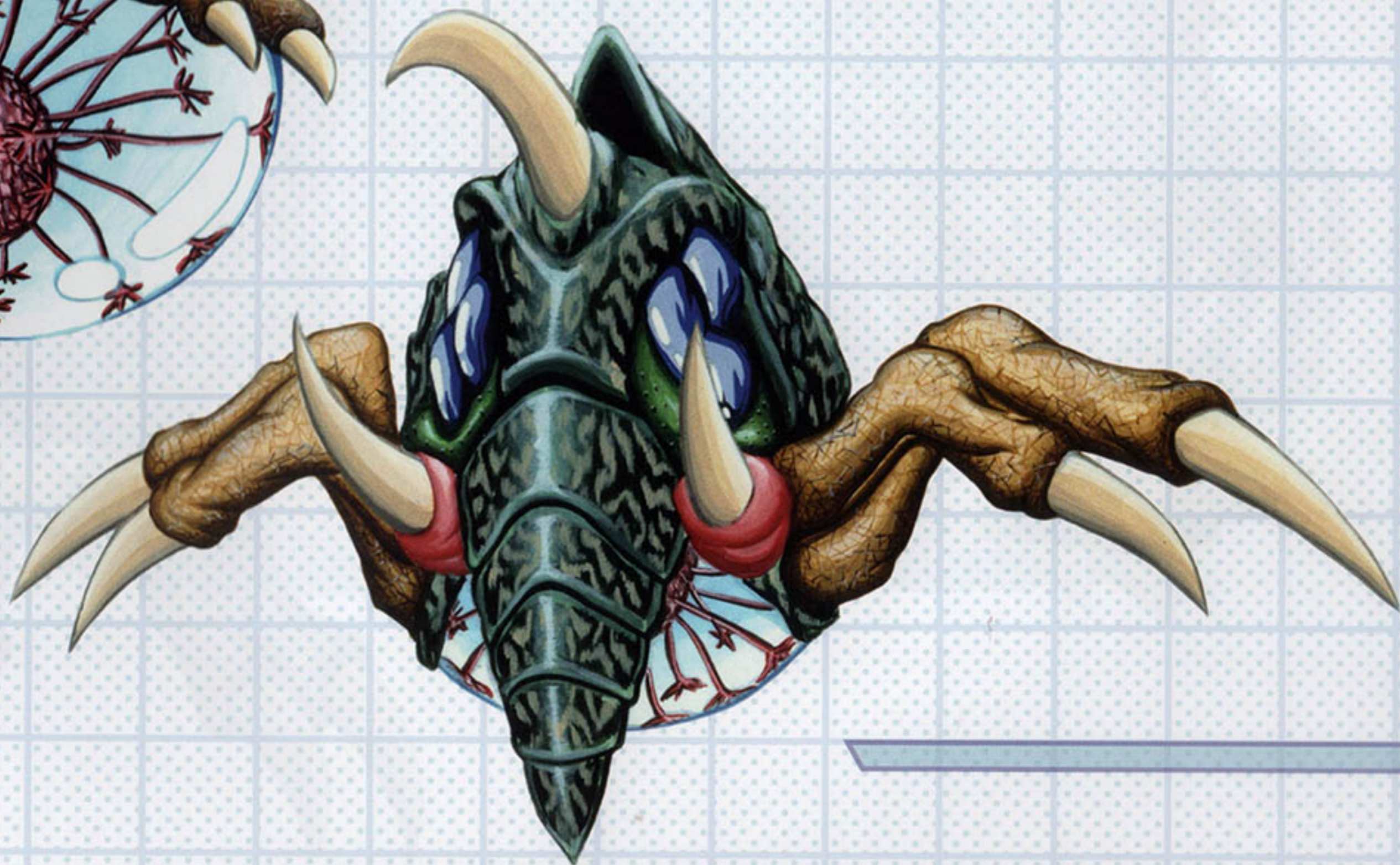


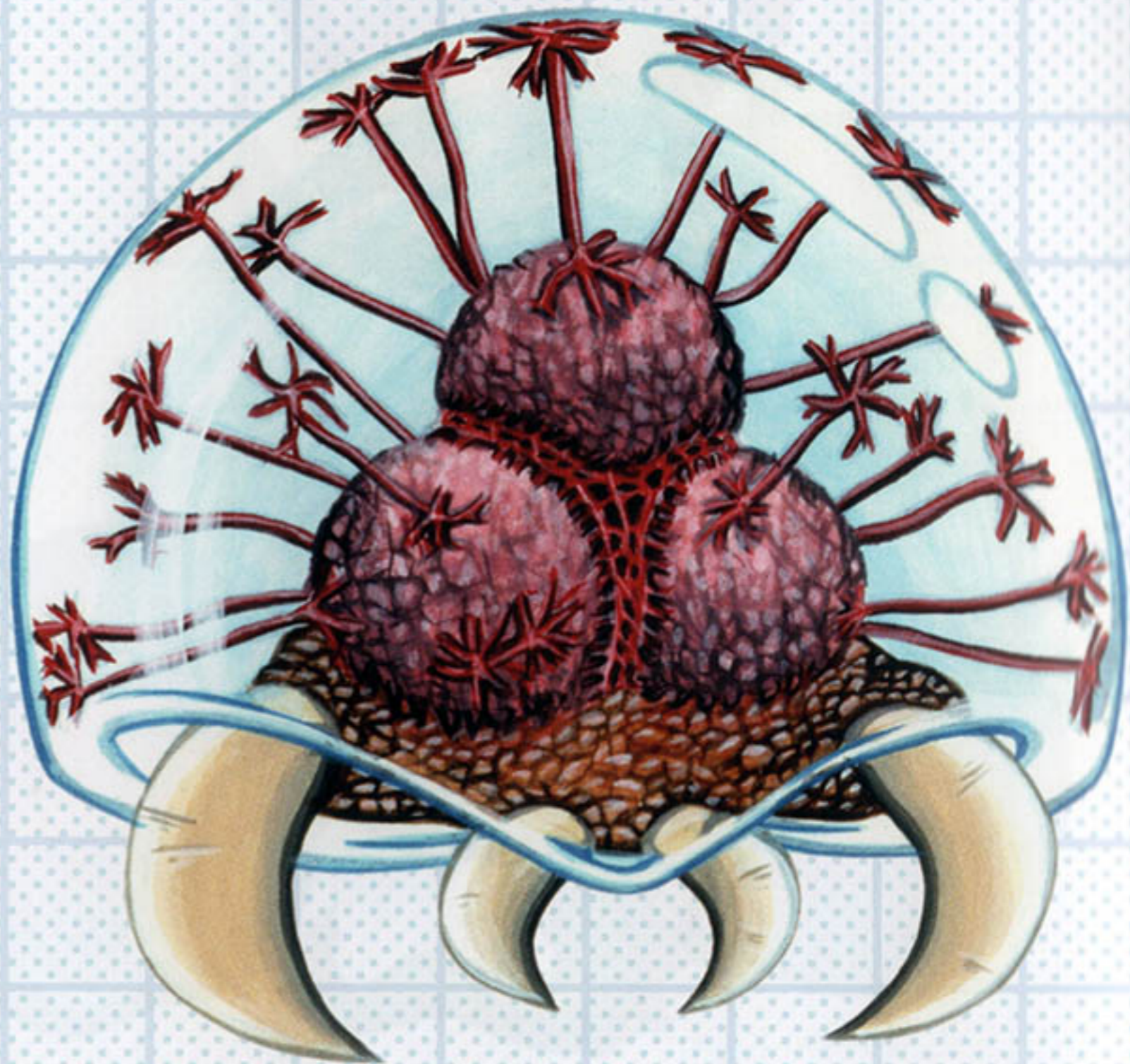
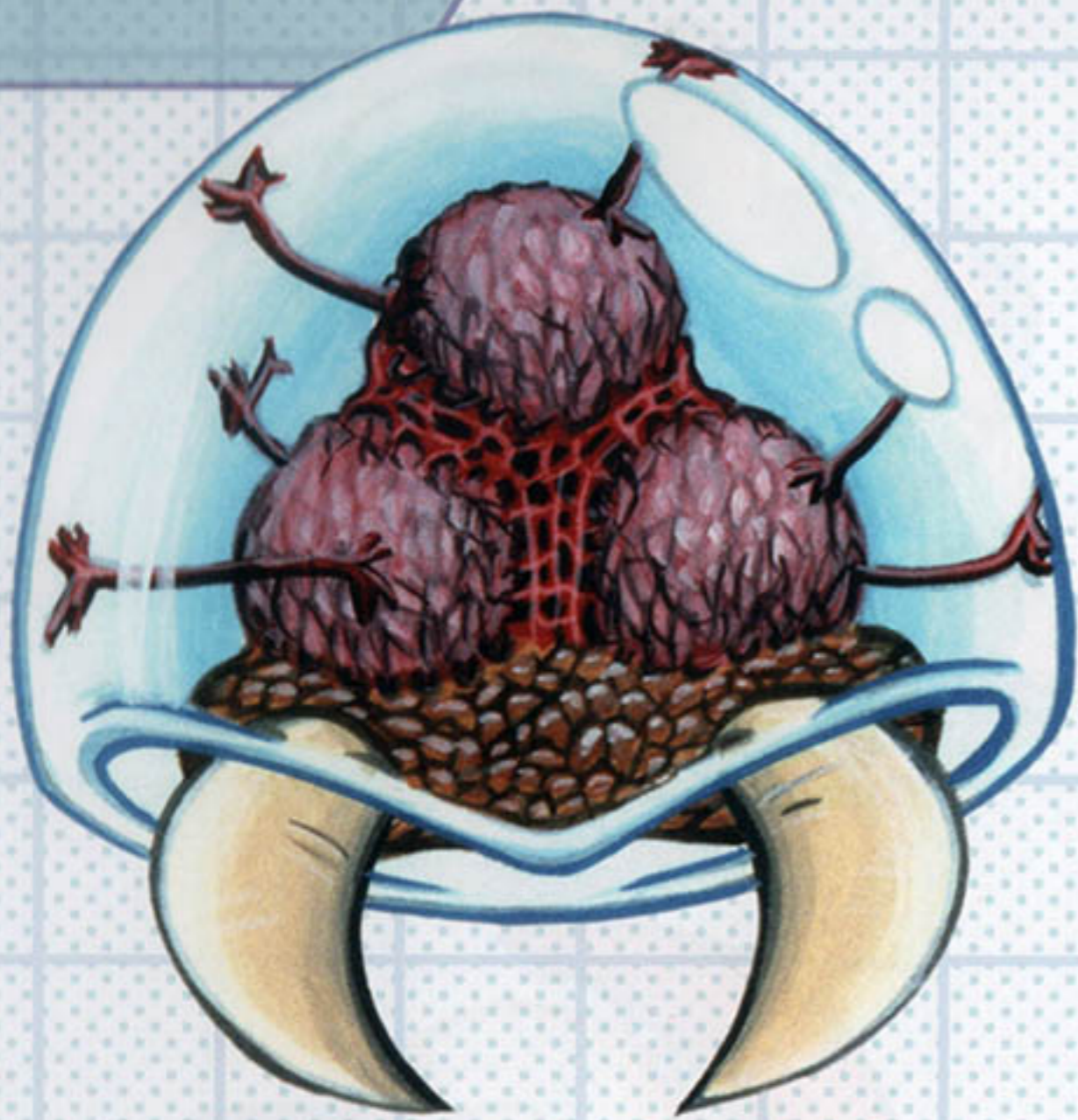




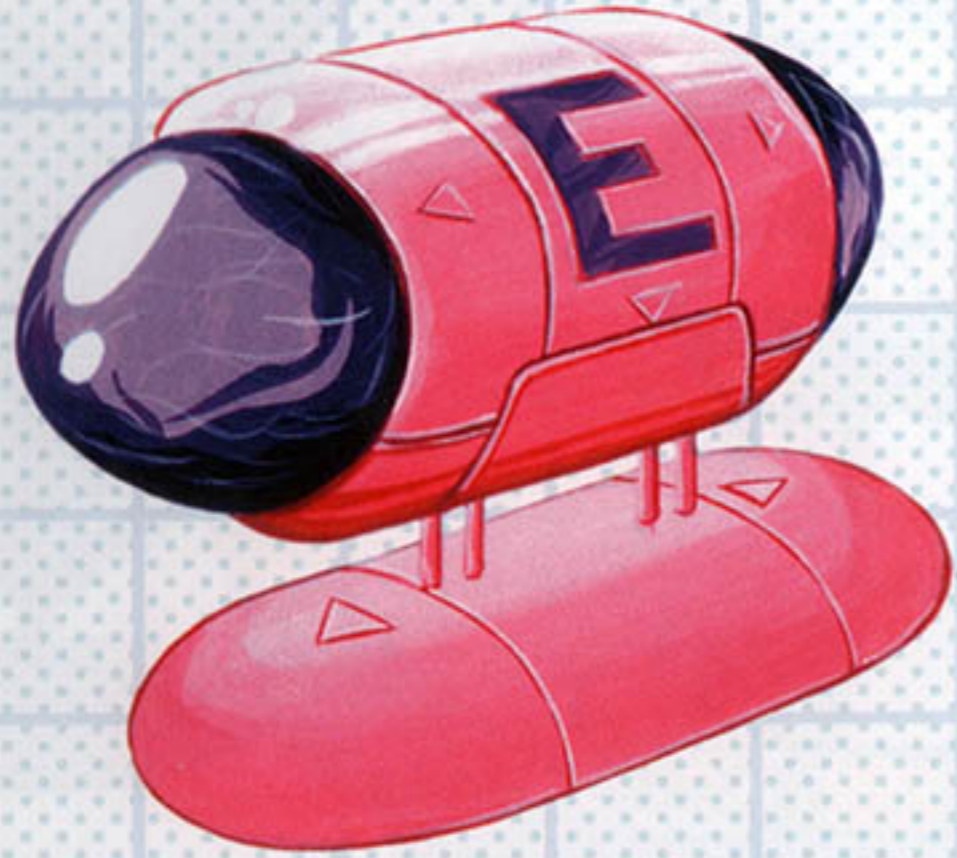


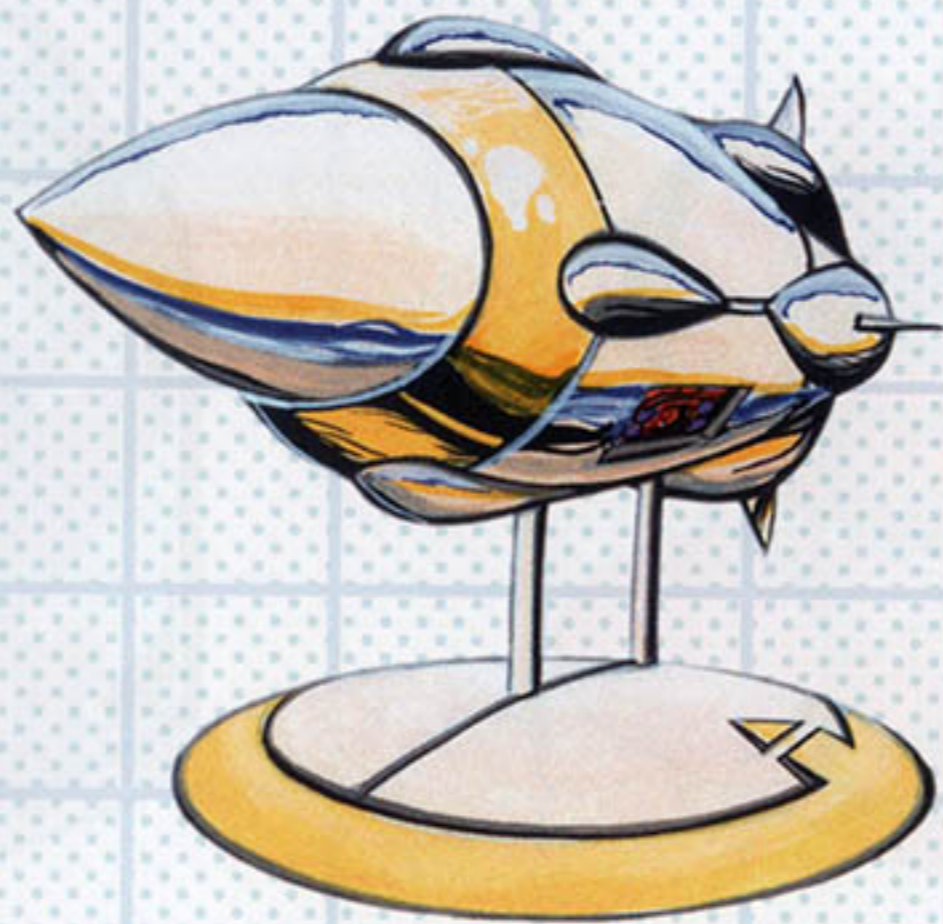
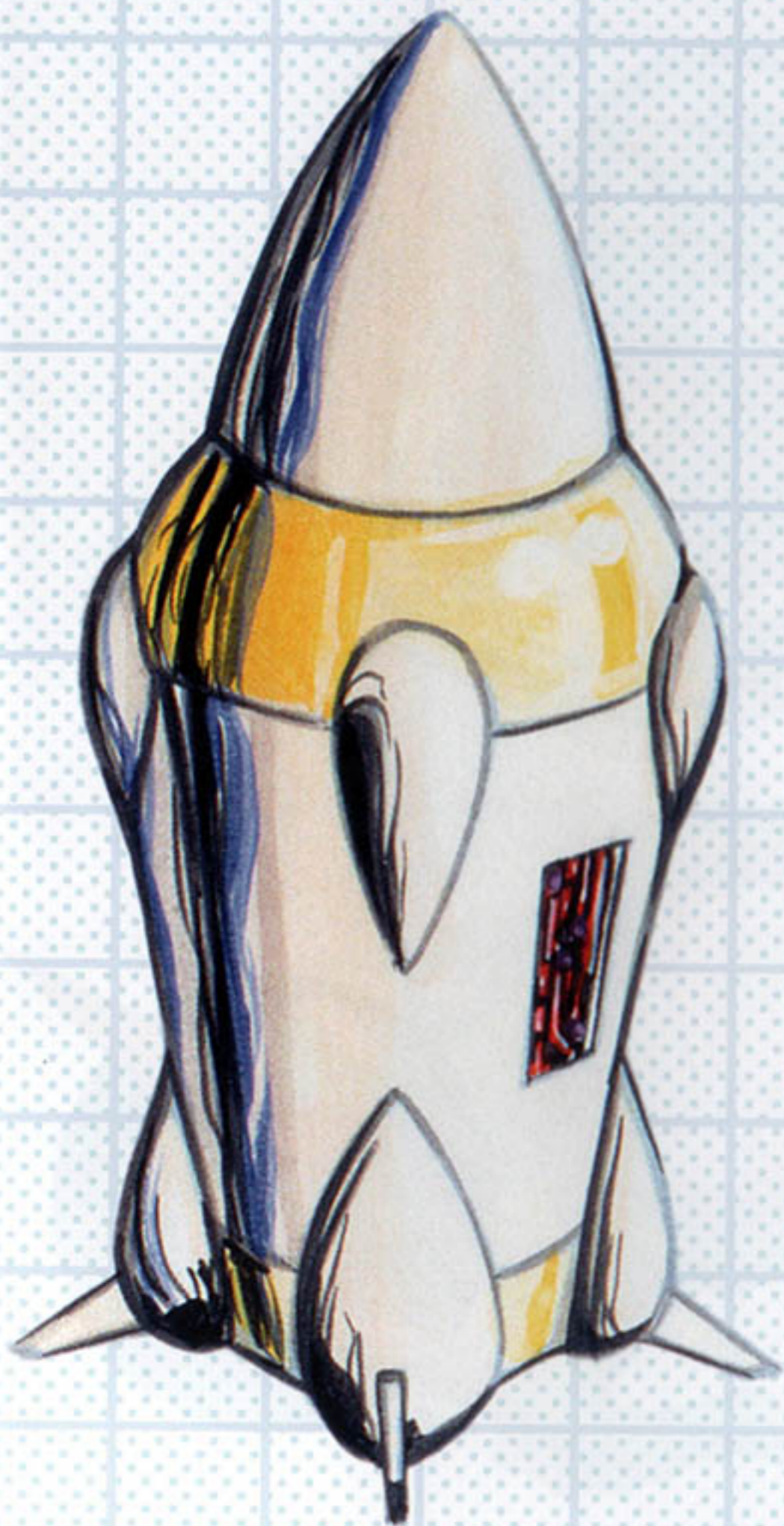


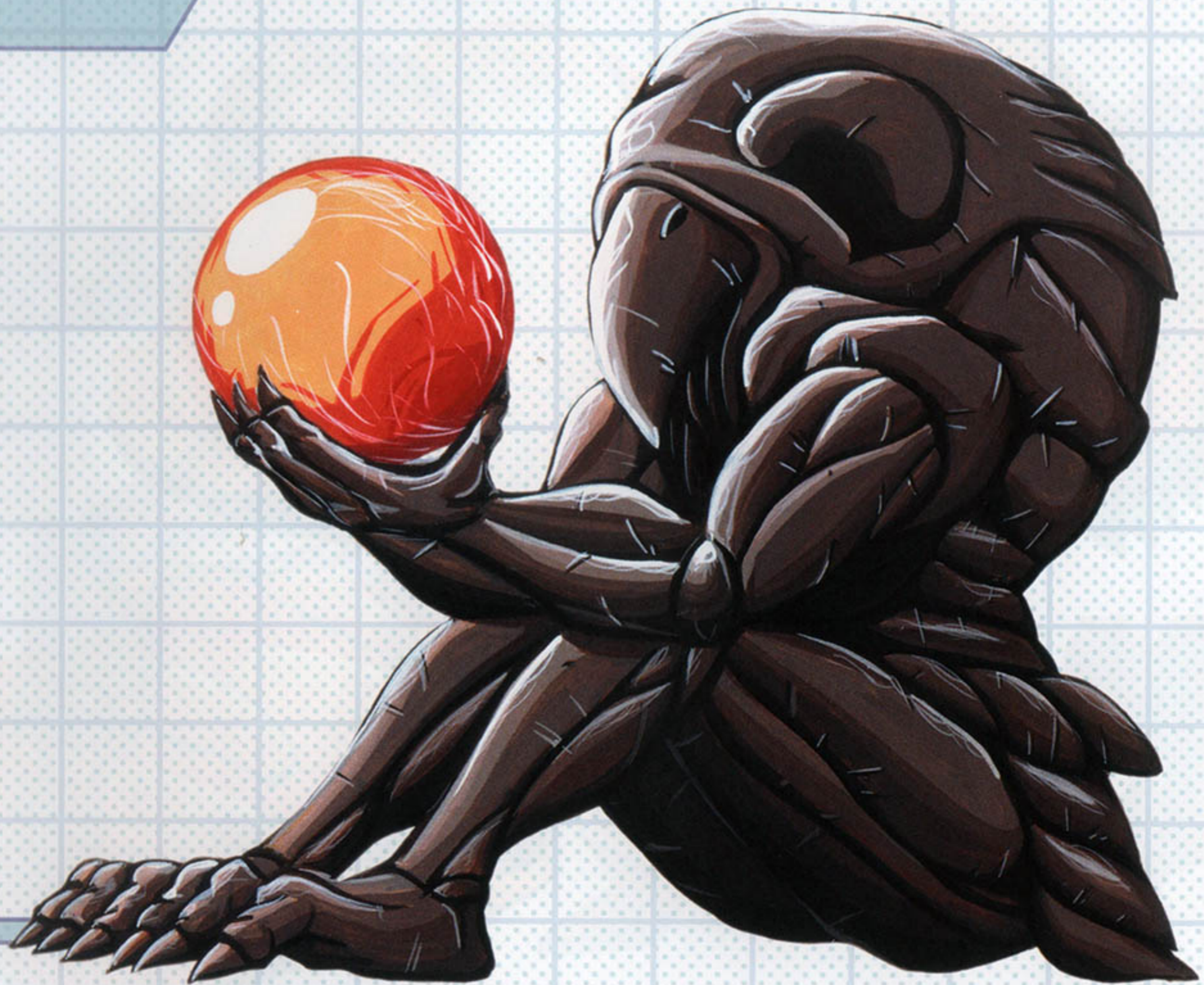




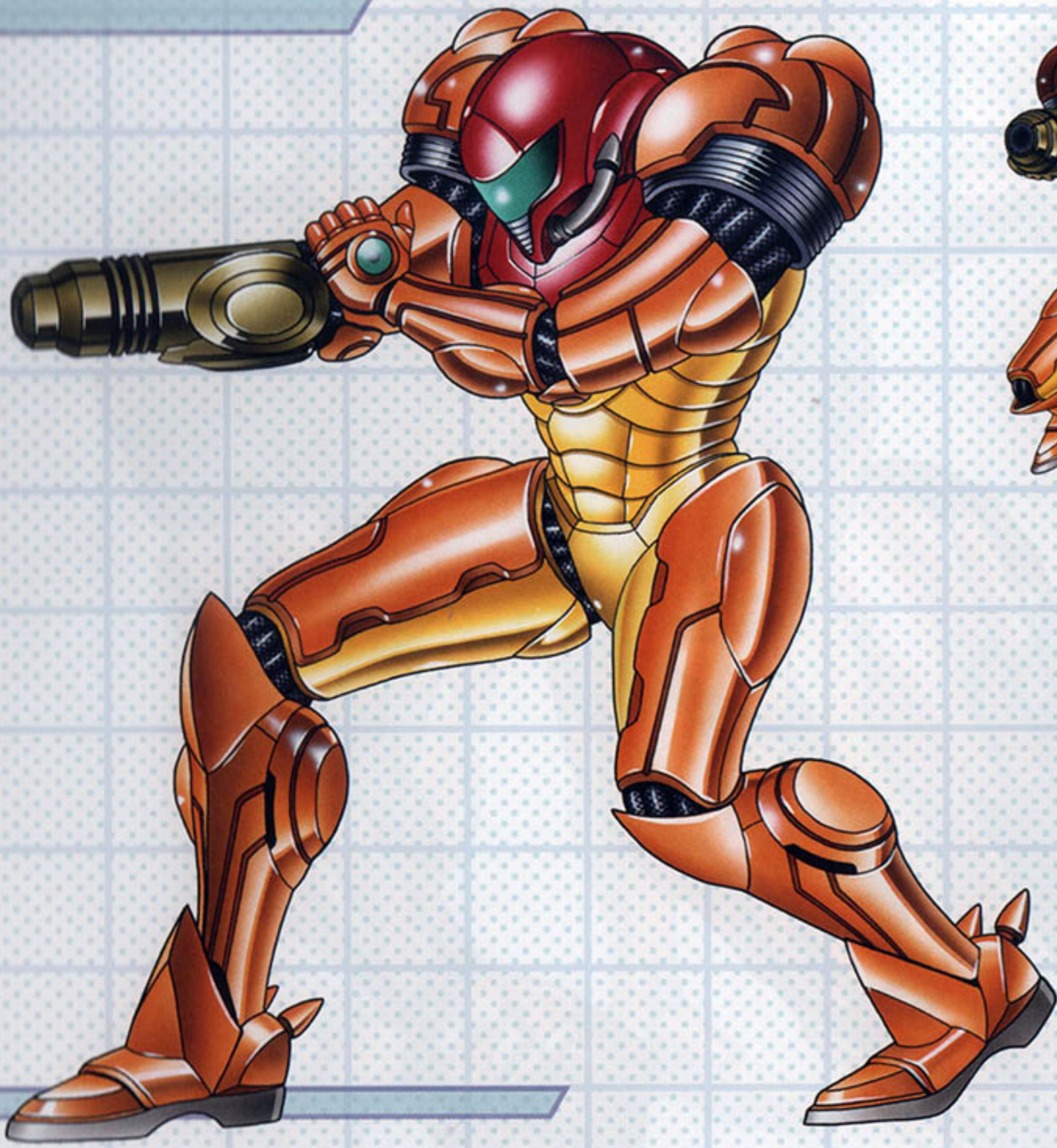


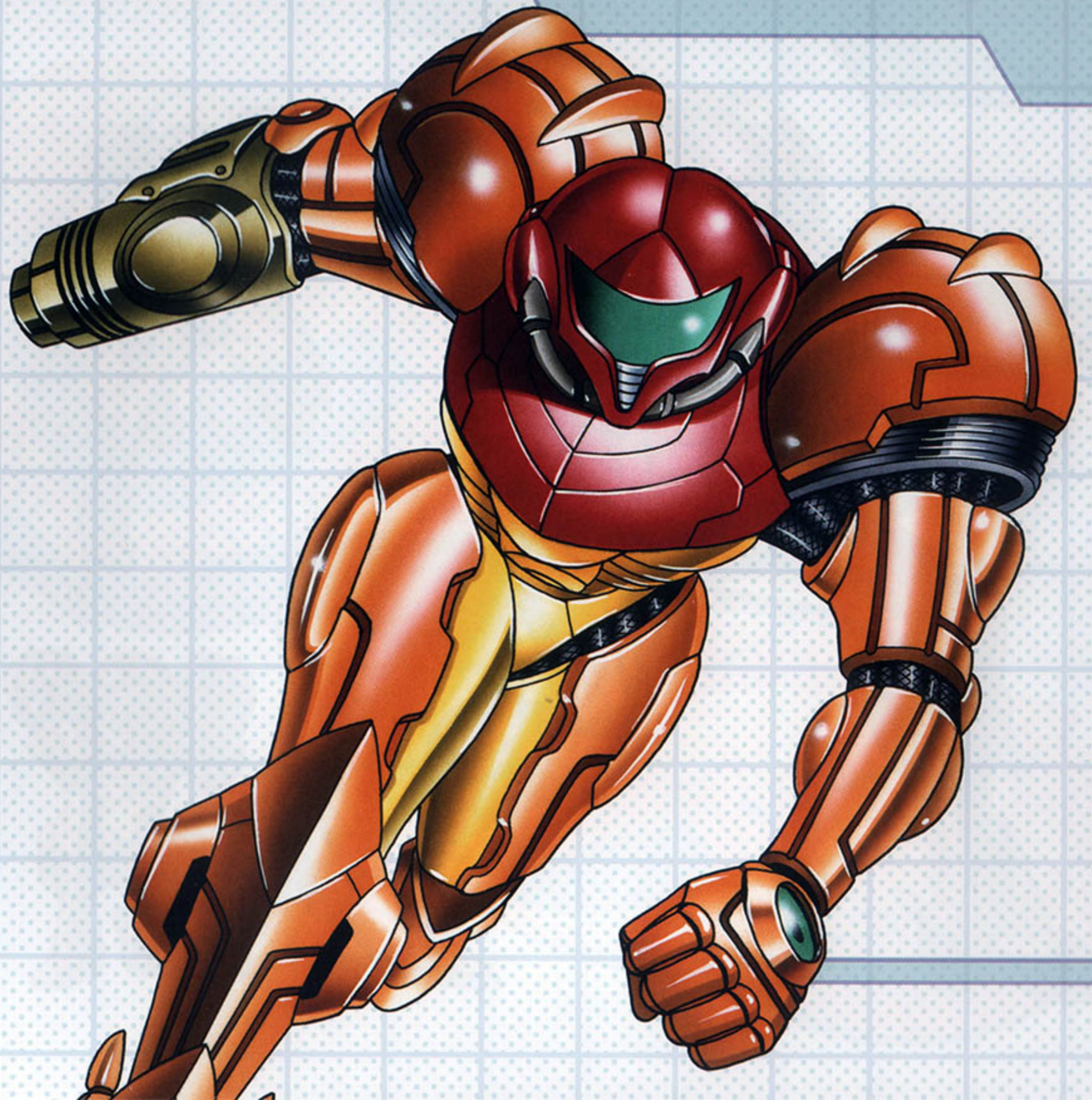


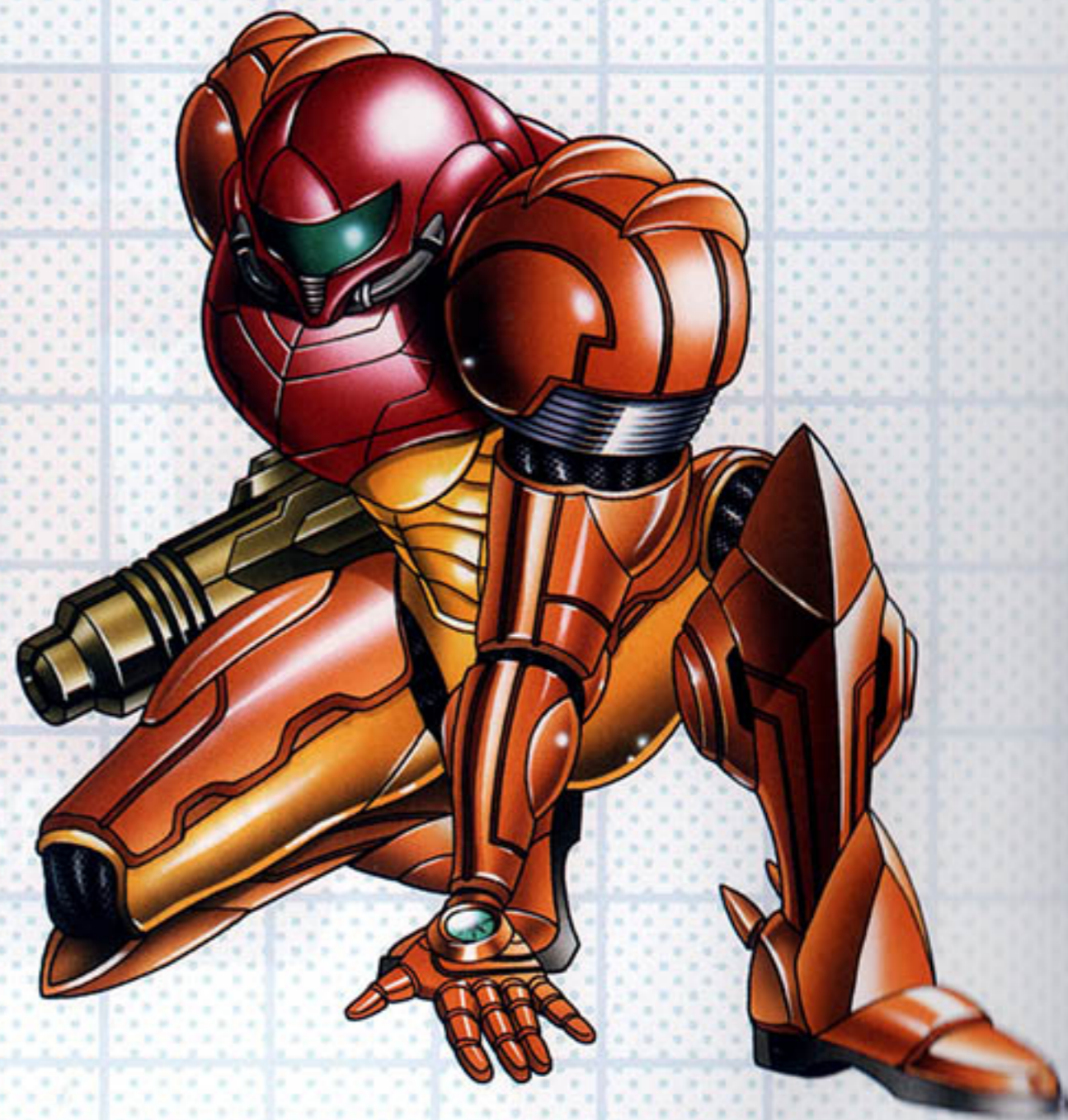
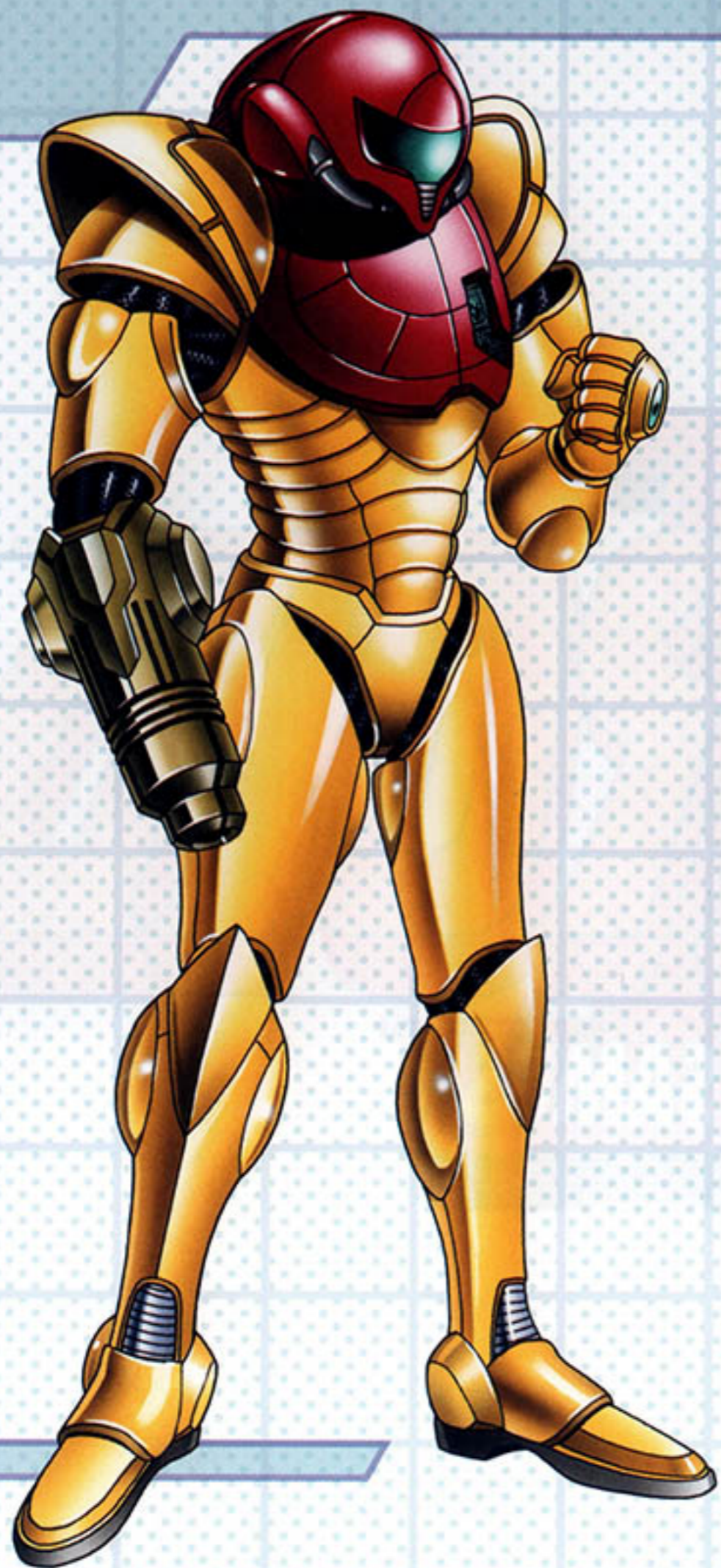














The logo for the video game Metroid: Return of Samus. The word "METROID" is rendered in large, bold, yellow-orange 3D block letters with a red outline and a red shadow. The letter "T" is significantly larger and positioned above the "R". Below "METROID" is a red 3D rectangular box containing the text "RETURN OF SAMUS" in white, bold, sans-serif capital letters. Two "TM" trademark symbols are present: one to the right of "METROID" and one to the right of "RETURN OF SAMUS".

METROID™

RETURN OF SAMUS™



METROID™

RETURN OF SAMUS™

The logo features the word "METROID" in large, bold, yellow 3D block letters with orange and red shading. A large red "T" is positioned above the "R". Below "METROID" is a red rectangular box containing the text "RETURN OF SAMUS" in white, bold, sans-serif capital letters. Small "TM" symbols are located to the right of "METROID" and to the right of the "RETURN OF SAMUS" box. The background is dark grey with a faint grid pattern.